

Bow

LED Luminaire



VISIONAIRE LIGHTING
Performance In A Whole New Light



LED Garage Luminaire - Bow



Simple • Linear • Efficient... Bow LED

The new Bow LED luminaire from Visionaire simplifies the task of selecting the best solution for LED parking garage lighting.

Simple

- Two key components, the driver housing and the linear LED arrays are used to complete the Bow.
- Separating the driver housing and the linear LED arrays optimizes the operational life of the LEDs and the Driver(s).
- Bow LED fixtures can be mounted without opening the driver housing.

Linear

- Why is the Bow linear in shape? The linear separation of the LEDs in the Bow minimizes the heat transfer between individual LEDs that is prevalent in a “clustered LED” fixture design. “Clustering” too many LEDs in a small enclosure creates heat.
- Pre-cast concrete parking structures have linear coffers. The Bow LED compliments this linear structure creating an integrated lighting effect and high performance output.
- With two LED arrays in each fixture, the perceived light coverage is maximized for the parking structure pedestrian and driver.

Efficient

- Minimizing the part count keeps the initial fixture costs efficiently low.
- Foot-candle levels are uniform at 30'x30' spacing and greater in many cases.
- Cast aluminum construction with an IP66 rating ensures years of maintenance free illumination.
- Lighting control options enhance the energy savings already in place with the Bow LED luminaire.

All of the information needed to specify the Bow LED parking garage luminaire can be found on the following pages.

4



SIZE 1

6



SIZE 2

5



9



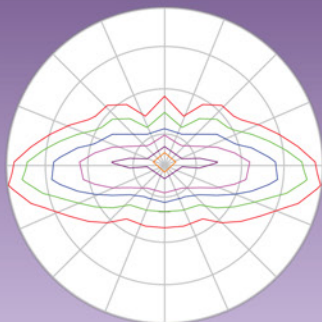
11



PHOTOMETRIC PERFORMANCE & OPTICAL RECOMMENDATION

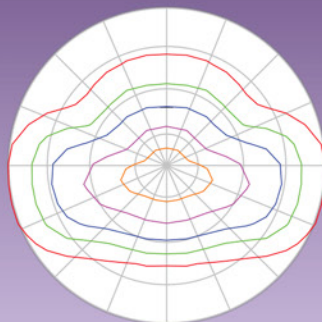
Product configurations are tested to LM-79 and Design Light Consortium standards, verified through independent testing.

Type I Optic



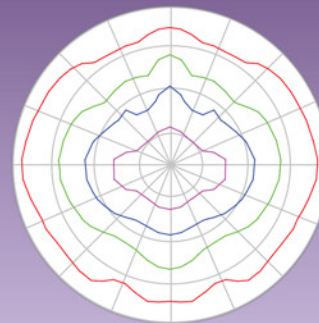
- Single Drive Lane
Long Coverage for
Parking Structures

Type II Optic



- Double Drive Lane
Wide Coverage for
Parking Structures

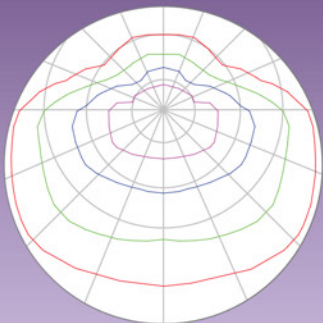
Type III Optic



Type III distribution is for general parking where large quantity of lighting is needed.

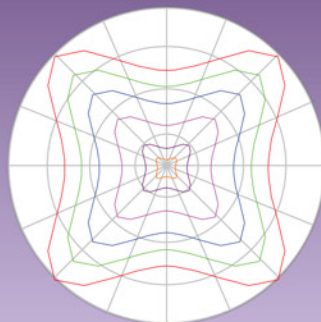


Type IV Optic



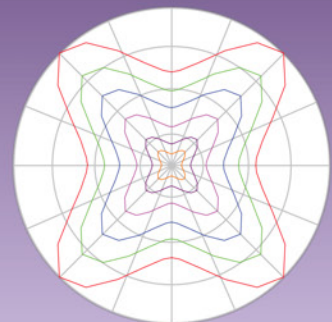
Type IV works well for lighting fixtures mounted on walls, best for illuminating from the perimeter.

Type V Optic



- Uniform Coverage for High Clearance Parking Structures

Type V-W Optic



Type V-W is Ideal for uniform light distribution with greater fixture spacing.

Overall linear fixture design makes the Bow ideal for many applications including parking garages, open ceiling areas, atriums and lobbies.

2 X LED Array Design

Offers a total LED count of 32 (BOW1) or 64 (BOW2), linear Bow design creates uniform lighting results.

Integral Die Cast Heat Sink Design

Maximizes LED life (see LED Data Chart) and enhances aesthetic appeal.

Die Cast Aluminum Housing

Conveniently houses the driver and control options while allowing for easy installation and maintenance.

Standard J Box Mounting

Bow mounts easily and securely through the top of the die cast housing, very easy in retrofit applications, with Speed Mount Bracket™.

Pendant Mount

A cast aluminum mounting hub is supplied with a 3/8" NPT stem.

Bow Mounting options



Pendant Mount



Speed Mount Bracket™

LED Driver Assembly

Offers Three different milliamp options resulting in a wide variety of wattage/lumen packages.

Bow
LED Parking Garage Luminaire



Optional Motion Sensor

Mounts directly to cast housing.

Captive Stainless Steel Screws

Countersunk, tamper proof screw secures gasketed housing cover.

1 Piece Silicone Weatherproof Gasket

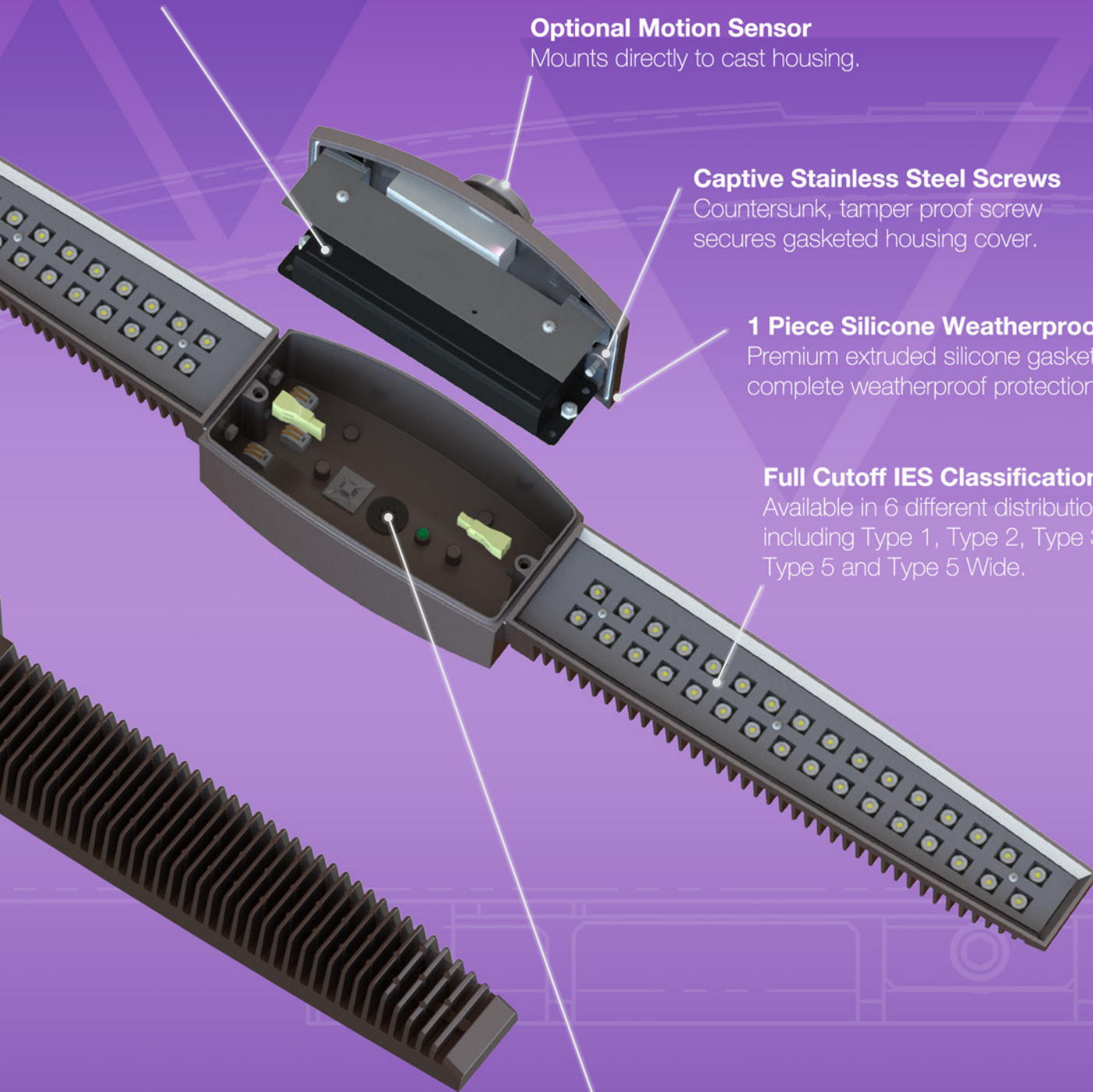
Premium extruded silicone gasket provides complete weatherproof protection.

Full Cutoff IES Classifications

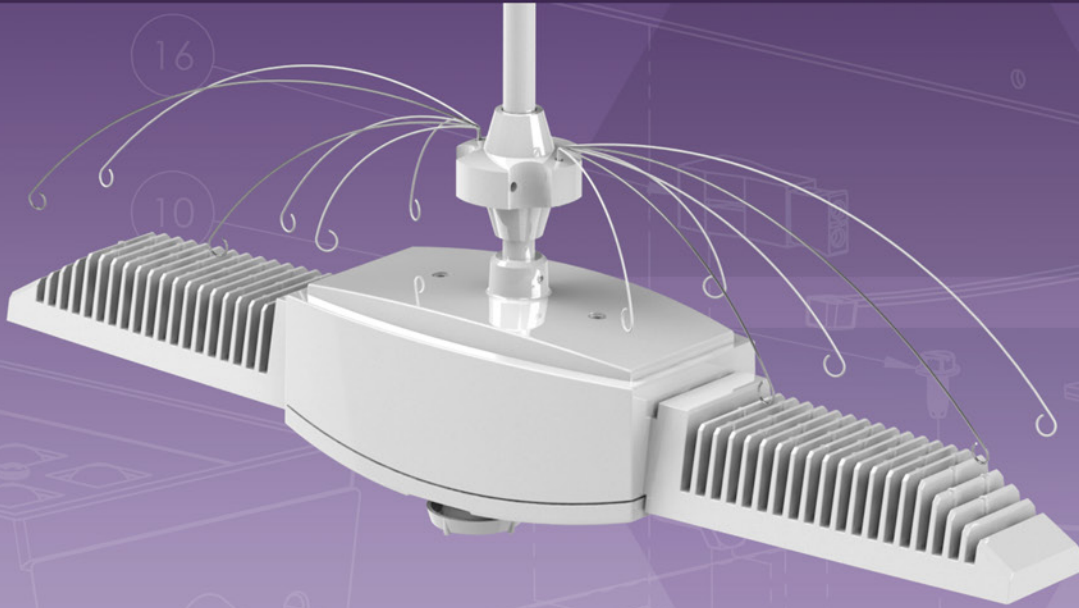
Available in 6 different distribution patterns including Type 1, Type 2, Type 3, Type 4, Type 5 and Type 5 Wide.

Weather Proof Grommet

8" wire leads supplied on direct mount fixtures eliminating need to open fixture during installation.



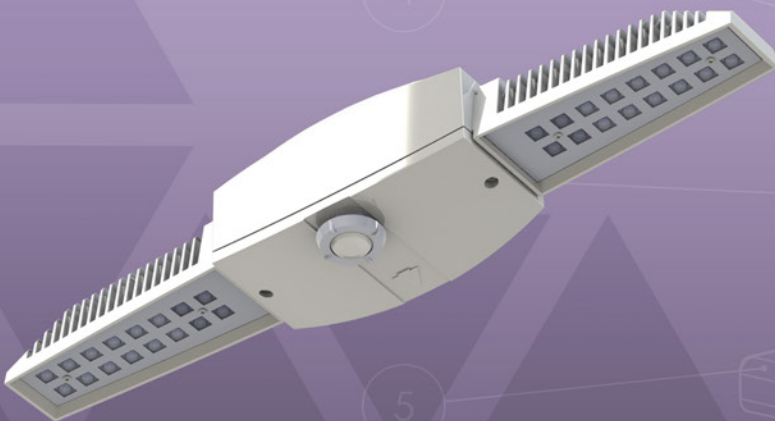
SPECIFICATION OPTIONS



BIRD DETERRENT

- Keep Pest Birds from Landing & Roosting
- Low Maintenance / Safe / Humane
- Affordable...Low Profile...Low Visibility

■ CONTROLLED WITH *WattStopper*®



Motion Sensor/Control WattStopper FSP-211

- Fully field adjustable high and low dimmed light levels
- Adjustable via hand-held wireless configuration tool
- Daylight Harvesting
- Lenses available for varying mounting heights



EASE OF INSTALLATION

1



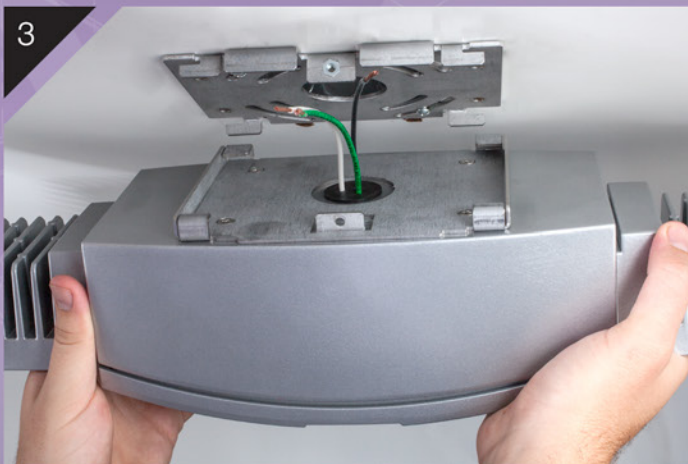
For ease of installation for direct mount applications; fixture is supplied with speed mount bracket installed and sealed 8" electrical leads; eliminating the need to open fixture during installation.

2



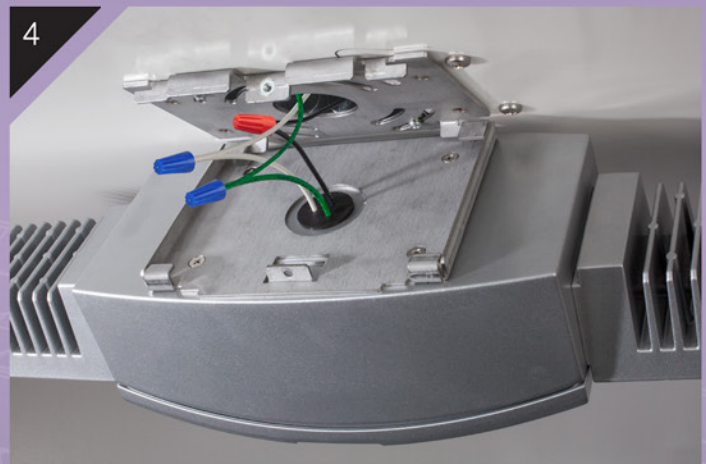
Attach the Speed Mount Bracket™ to the junction box.

3



Slide the fixture onto the Speed Mount Bracket™ hooks and allow it to hang for easy wiring connections.

4



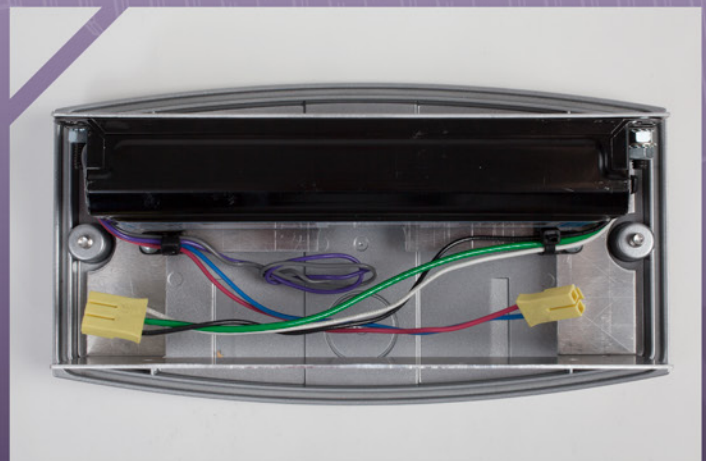
Make the Field wiring connections.

5



Lift fixture to closed position and tighten the tamper proof locking screw.

UPGRADEABILITY/MAINTENANCE



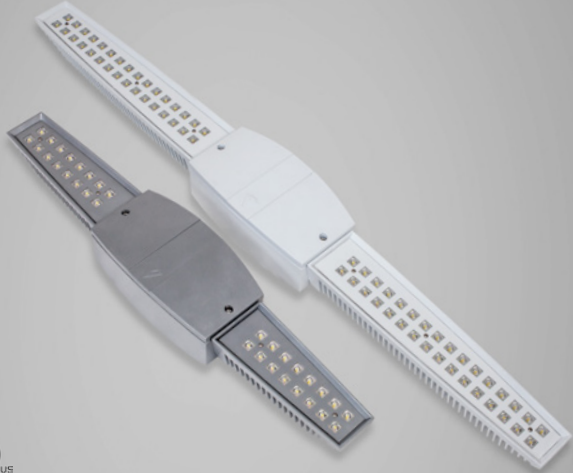
Door/Driver Assembly is easily removed for maintenance or upgradeability.

Bow LED

Project Name:

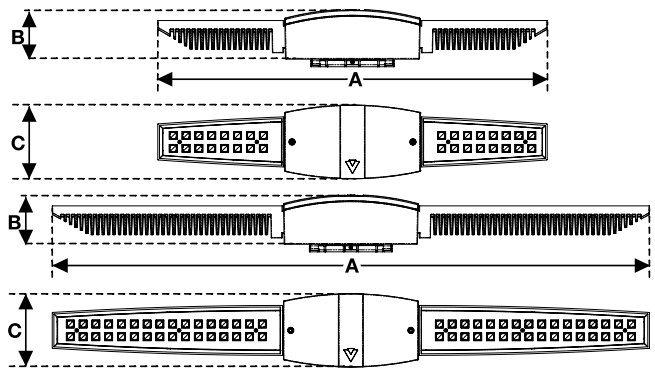
Catalog Number:

Type



Patent No. USD688403S

Dimensional Drawings



Fixture	A	B	C	Max. LEDs	Lbs
BOW-1	29½"	4"	5½"	32	18
BOW-2	46½"	4"	5½"	64	22

The new Bow LED luminaire from Visionaire, simplifies the task of selecting the best solution for LED parking garage lighting. The linear design of the luminaire, compliments the linear design of the pre-cast concrete coffer; creating an integrated lighting effect; and maximizes the perceived lighting coverage. It is an ideal replacement for the high-maintenance fluorescent fixtures of yesterday.

Six optical distribution patterns are available. Choose between 3000, 4000 or 5000 Kelvin temperature of the LED's.

The LED light engines are die-cast aluminum with external heat radiating fins for maximum heat dissipation; and is available in two sizes with either 32 or 64 LEDs. The separate cast aluminum driver compartment allows the driver to operate cooler for long life. Available for pendant mounting, wall mounting or choose the shallow speed mount bracket.

A durable polyester powder coat finish is guaranteed for five years; and is available in standard or custom colors.

The Bow LED series is an exceptional choice for parking garage lighting and other ceiling mount applications.

Model	Optics	Source	Milliamps	Kelvin	Voltage	Mounting	Finish	Options
BOW-1	Type I (T1) 	# of LEDs 32 (32LC)	mA 350 (3)	3000K *Warm white (3K)	120-277 *Universal voltage (UNV)	Speed Mount Bracket™ Ceiling Mount (SMB) This does not include provision for conduit access.	Fixture Finish Smooth Black (SBK)	0-10v Dimming Driver No Controls (DIM)
	Type II (T2) 							
BOW-2	Type III (T3) 	64 (64LC)	530 (5)	4000K *Neutral white (4K)	347 (8)	Pendant Mount 12" (PM12) 24" (PM24) 36" (PM36)	Smooth White (SWH) Silver Metallic (SL) Graphite (GP)	Motion Sensor/Control Watt Stopper FSP-211 <small>8" Mounting Height</small> <small>Must specify Dimming Driver.</small> <small>*120V-277V Only</small> (WSC-8) <small>3" Mounting Height</small> (WSC-20) <small>9-20" Mounting Height</small> (WSC-40) <small>21-40" Mounting Height</small> <small>This option will require (1) FSIR 100 remote for programming</small>
	Type IV (T4) 							
	Type V (T5) 							
	Type V-W (T5W) 							
	Wall Mount (WM)							
	Up Light Mount 12" (UPL12) 24" (UPL24) 36" (UPL36) <small>*For indoor applications only.</small> <small>*Pendant Mount only.</small>							
								Motion Sensor <small>On/Off</small> (MS)
								Wireless Control (WC) Consult Factory
								Bird Deterrent <small>*Works with Pedant Mount only</small> (BD)
								Lightly Diffused Lens (LDL)

For more detailed information on mounting, wiring or installation instructions, please consult factory. If poles are not ordered with fixtures, please specify mounting requirements. This document contains proprietary information of Visionaire Lighting, LLC. Any use of this information requires the written approval of Visionaire Lighting, LLC. In keeping with our TQM policy of continuous improvement, Visionaire reserves the right to change any specifications contained herein without prior notice.

Housing

The separate driver housing is constructed of cast aluminum with a cast aluminum cover with captive fasteners; for easy access to the LED driver; allowing for cooler operation and longer life. Silicone gasketing is utilized throughout the fixture for weather tight operation.

Thermal Management

The BOW Series provides excellent overall thermal management by maximizing the fixture’s dual heat sink capabilities. This enables the Bow Series to withstand higher ambient temperatures and drive currents without degrading LED life. The BOW Series has a low thermal resistance rating. The heat radiating fins create superior thermal dissipation. The L70 test determines the point in an LEDs life when it reaches 70 percent of its initial output. The BOW Series LEDs have been determined to last a minimum of 100,000 hours in 25 °C environments when driven at 350 mA.

Optical System

The highest lumen output LEDs are utilized in the BOW Series. IES distribution Types I, II, III, IV, V and V-W are available. LED light assemblies come in multiples of 16 or 32 LEDs. CRI values are 70.

Quali-Guard Finish

A Quali-Guard thermoset polyester powder coat painted finish is available in standard and custom colors.

Mounting

A galvanized steel ceiling mount bracket can be secured directly to a recessed junction box, or to the ceiling for surface mounting of the fixture. Mounting studs extend from the bracket for easy mounting of the housing to the ceiling mount bracket. A cast aluminum mounting hub is supplied with a 3/8" NPT for pendant mount applications.

Electrical Assembly

The BOW Series is supplied with a choice of 350, 530 or 700 mA high-performance LED drivers that accept 120v thru 480v, 50 Hz to 60 Hz, input. Power factor of 90%. Rated for -40°C to +55°C operations. 10 kV surge protector supplied as standard.

Warranty

Five (5) year Limited Warranty on entire system, including finish. For full warranty information, please visit visionairelighting.com.

Options

- 0-10v Dimming Driver
- Watt Stopper FSP-211
- Motion Sensor
- Wireless Control
- Bird Deterrent
- Lightly Diffused Lens

Listings

- ETL Listed
- LM79 and LM80
- RoHS compliant
- IP-66 listed
- DLC listed
- Powder Coated Tough™

Patent No. USD688403S



DesignLights Consortium (DLC) qualified Product. Some configurations of this product family may not be DesignLights Consortium (DLC) listed, please refer to the DLC qualified products list to confirm listed configurations. <http://www.designlights.org/>

Bird Deterrent



Up Light Mount



LED Data Chart for 5000K* Lumen Chart updated 08.21.17

# LEDs	mA	Type 1	B	U	G	LPW	Type 2	B	U	G	LPW	Type 3	B	U	G	LPW	Type 4	B	U	G	LPW	Type 5	B	U	G	LPW	Type 5W	B	U	G	LPW	Watts
32	350	4985	2	0	2	142	4710	1	0	2	135	4719	1	0	1	135	4512	1	0	1	129	4956	2	0	1	142	4809	3	0	1	137	35
	530	7048	3	0	3	123	6660	2	0	2	117	6672	1	0	1	117	6380	1	0	2	112	7007	3	0	1	123	6799	3	0	1	119	57
	700	8969	3	0	3	121	8475	2	0	2	114	8490	1	0	2	114	8118	2	0	2	109	8917	3	0	1	120	8653	3	0	2	116	74
	1000	12310	3	0	3	113	11632	3	0	3	107	11653	2	0	2	107	11143	2	0	2	102	12240	3	0	2	112	11876	4	0	2	109	109
64	350	9785	3	0	3	133	9246	2	0	3	126	9263	1	0	2	126	8857	2	0	2	120	9729	3	0	1	132	9440	3	0	2	128	74
	530	14157	3	0	3	131	13378	3	0	3	124	13402	2	0	2	124	12815	2	0	2	118	14077	3	0	2	130	13659	4	0	2	126	108
	700	17690	4	0	4	125	16717	3	0	3	118	16746	2	0	2	118	16570	3	0	3	117	17589	4	0	2	124	17067	4	0	2	120	142

Visit www.VisionaireLighting.com for up-to-the-minute chart information, including types not listed here.
 * For 4000K multiply values by 0.98 * For 3000K multiply values by 0.925



19645 Rancho Way . Rancho Dominguez, CA 90220
310.512.6480
www.VisionaireLighting.com