

BOW - Surface J-box Mount Installation Instructions

SPECIFICATIONS

- Dimensions:
- BOW-1 W5.5" L 29.5" H 6" 16 Lbs
- BOW-2 W5.5" L 46.5" H 6" 22 Lbs



BEFORE YOU BEGIN

- Read these instructions completely and carefully.
- Save these instructions for future use.

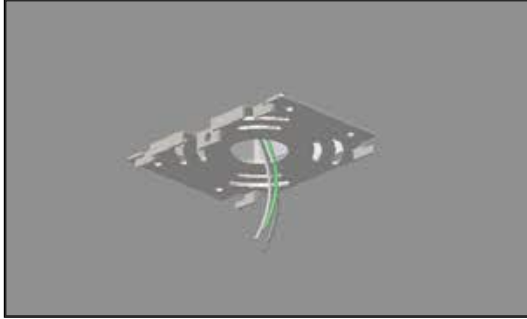


Fig. 1



WARNING

- To avoid possible risk of fire or shock turn power off prior to installation or maintenance, Preferably at circuit breaker.
- Product must be installed per all NEC and/or local Electrical Codes.

UNPACKING

- This luminaire has been properly packaged so that damage shall not occur during transportation.
- Inspect and confirm.

NOTE

- Integrity of luminaire mounting to surface is not responsibility of Visionaire Lighting

INSTALLATION

- Attach Speed mount bracket® to j-box (by others) and pull supply leads thru center hole of Speed mount bracket (see fig. 1)
- Slide housing hanger, already mounted to the luminaire onto the Speed mount bracket® (see fig. 2) and let hang as shown (see fig. 3)
- Verify wattage against label installed on luminaire and make electrical connections per NEC and/or any applicable local codes (see fig. 3)
- Swing luminaire up to Speed mount bracket® as shown (see fig. 4) and firmly attach with stainless steel socket head screw (see fig. 5)

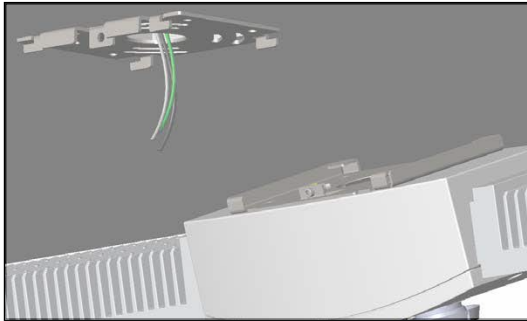


Fig. 2

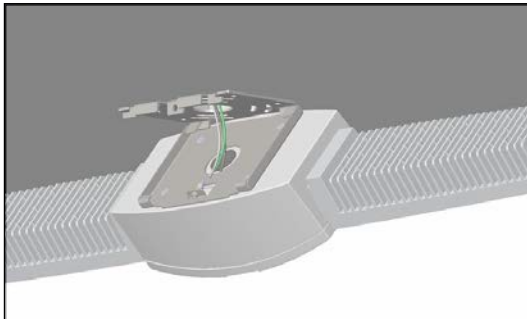


Fig. 3

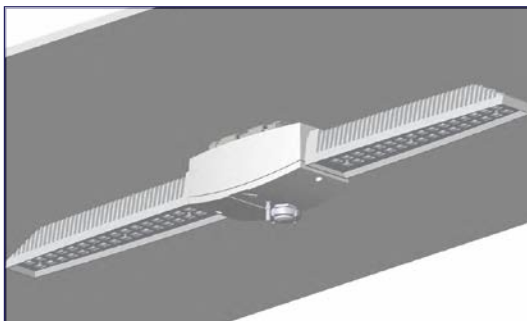


Fig. 4

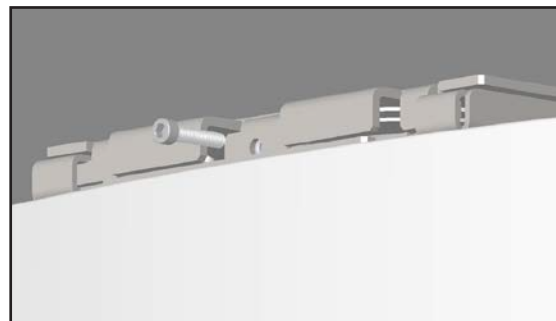


Fig. 5

