

# VSF LED Specifications



Project Name:

Catalog Number:

Type:

The new **VSF LED** Series offers clean, functional styling that is defined by its sleek low profile design and rugged construction. It combines LED performance and advanced LED thermal management technology and provides outdoor lighting that is both energy efficient and aesthetically pleasing.

The LED's performance and the driver's life are maximized by enclosing them in two separate cast aluminum housings.

The LED light assemblies come with 16 to 48 LED's. Multiple optical distribution patterns are available. Choose between 3000, 4000 or 5000 Kelvin temperature of the LEDs.

A durable polyester powder coat finish is guaranteed for five years; and is available in standard or custom colors.

The **VSF LED** series is an exceptional choice for building lighting, sign lighting, and other flood lighting applications.

## Ordering Information

MODEL	OPTICS	ARRAYS	CURRENT	KELVIN	VOLTAGE	MOUNTING	FINISH	OPTIONS	OPTIONS
VSF-1	7x5	<b>16LC</b> *347/480V Not Available	<b>3</b> 350mA	<b>3K</b> 3000K	<b>UNV</b> 120-277V	<b>KM</b> Knuckle Mount Slips over 2 3/8" Tenon with adjustable increments of 10"	<b>BZ</b> Bronze	<b>PC-120</b> Button Type Photocell	<b>UMAP</b> Universal Mast Arm Fitter
	7x7	<b>32LC</b> *347/480V Not Available at 350mA	<b>5</b> 530mA	<b>4K</b> 4000K	<b>8</b> 347V		<b>BK</b> Black	<b>PC-208</b> Button Type Photocell	<b>ECLS</b> Egg Crate Light Shield
	<b>FN</b> Flood Narrow		<b>7</b> 700mA	<b>5K</b> 5000K	<b>5</b> 480V	<b>TM</b> Trunnion Mount adjustable up to 90° in 5° increments.	<b>SBK</b> Smooth Black	<b>PC-240</b> Button Type Photocell	<b>ADJLS</b> Adjustable louver light shield
	<b>FM</b> Flood Medium	<b>48LC</b>			*347V & 480V not available in 32LC 350mA		<b>WH</b> White	<b>PC-277</b> Button Type Photocell	<b>BD</b> Barn Door Light Shield
						<b>NM</b> Nipple Mount slip threads over a 3/4" NPT, allows for up to 90° of vertical adjustment in 10° increments from horizontal	<b>SWH</b> Smooth White	<b>DIM</b> 0-10v Dimming Driver	<b>ZFP</b> Zinc-Free Primer
						<b>AWM</b> Adjustable Wall Mount allows for up to 70° of vertical adjustment in 10° increments from horizontal	<b>GP</b> Graphite		
							<b>GY</b> Grey		
							<b>SL</b> Silver Metallic		
							<b>CC</b> Custom Color		

## Housing

Cast aluminum LED housing with integral cooling fins for thermal management.

## Mounting Arm/Driver Compartment

Durable cast aluminum driver compartment opens for easy access to removable driver(s) for ease of maintenance, and cooler driver operation; and are sealed with one-piece silicone gaskets.

## Thermal Management

- The VSF series provides excellent thermal management by mounting the LED's to the substantial heat sink of the housing. This enables the Luminaire to withstand higher ambient temperatures and driver currents without degrading LED life.
- The L70 test determines the point in an LED's life when it reaches 70 percent of its initial output. The VSF series LED's have been determined to last 80,000+ hours in 25° C environments when driven at 350 mA.

## Optical System

- The highest lumen output LEDs are utilized in the V-Flood series. Multiple flood optical patterns are available.
- CRI values are 70.

## Quali-Guard® Finish

- The finish is a Quali-Guard® textured, chemically pretreated through a multiple-stage washer, electrostatically applied, thermoset polyester powder coat finish, with a minimum of 3-5 millimeter thickness. Finish is oven-baked at 400° F to promote maximum adherence and finish hardness. All finishes are available in standard and custom colors.
- Finish is guaranteed for five (5) years.
- Zinc-Free Primer is used as an additional protective barrier between the luminaire and harsh environments

## Electrical Assembly

- The VSF LED series is supplied with a choice of 350,530 or 700 mA high-performance LED drivers that accept 120v thru 480v, 50 Hz to 60 Hz, input. Power factor of 90%. Rated for -40 oC operations.
- 10 kV surge protector supplied as standard.

## Warranty

Five (5) year Limited Warranty on entire system, including finish. For full warranty information, please visit [VisionaireLighting.com](http://VisionaireLighting.com).

## Options

- Button Type Photocell
- 0-10v Dimming Driver
- UMAP
- Egg Crate Light Shield
- Adjustable Louver Light Shield
- Barn Door Shield

## Listings

- The VSF is UL Listed, suitable for wet locations.
- Powder Coated Tough.
- DLC Listed
- IDA Certification
- IP66

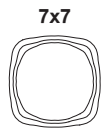
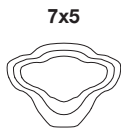


DesignLights Consortium (DLC) qualified Product. Some configurations of this product family may not be DesignLights Consortium (DLC) listed, please refer to the DLC qualified products list to confirm listed configurations. <http://www.designlights.org/> 3000K must be selected for IDA certification.

VSF - Electrical Load (A)							
Ordering Nomenclature	System Watts	120V	208V	240V	277V	347V	480V
<b>VSF-1-FN-16-3-4K</b>	<b>18</b>	0.15	0.09	0.08	0.06	0.05	0.04
<b>VSF-1-FN-16-5-4K</b>	<b>26</b>	0.22	0.12	0.11	0.09	0.07	0.05
<b>VSF-1-FN-16-7-4K</b>	<b>37</b>	0.31	0.18	0.15	0.13	0.11	0.08
<b>VSF-1-FN-32-3-4K</b>	<b>37</b>	0.31	0.18	0.15	0.13	0.11	0.08
<b>VSF-1-FN-32-5-4K</b>	<b>52</b>	0.43	0.25	0.22	0.19	0.15	0.11
<b>VSF-1-FN-32-7-4K</b>	<b>74</b>	0.62	0.36	0.31	0.27	0.21	0.15
<b>VSF-1-FN-48-3-4K</b>	<b>55</b>	0.46	0.26	0.23	0.20	0.16	0.11
<b>VSF-1-FN-48-5-4K</b>	<b>78</b>	0.65	0.38	0.32	0.28	0.22	0.16
<b>VSF-1-FN-48-7-4K</b>	<b>105</b>	0.88	0.50	0.44	0.38	0.30	0.22

# VSF LED Specifications

## Photometric Optical Summary



**EPA Data**



1.36

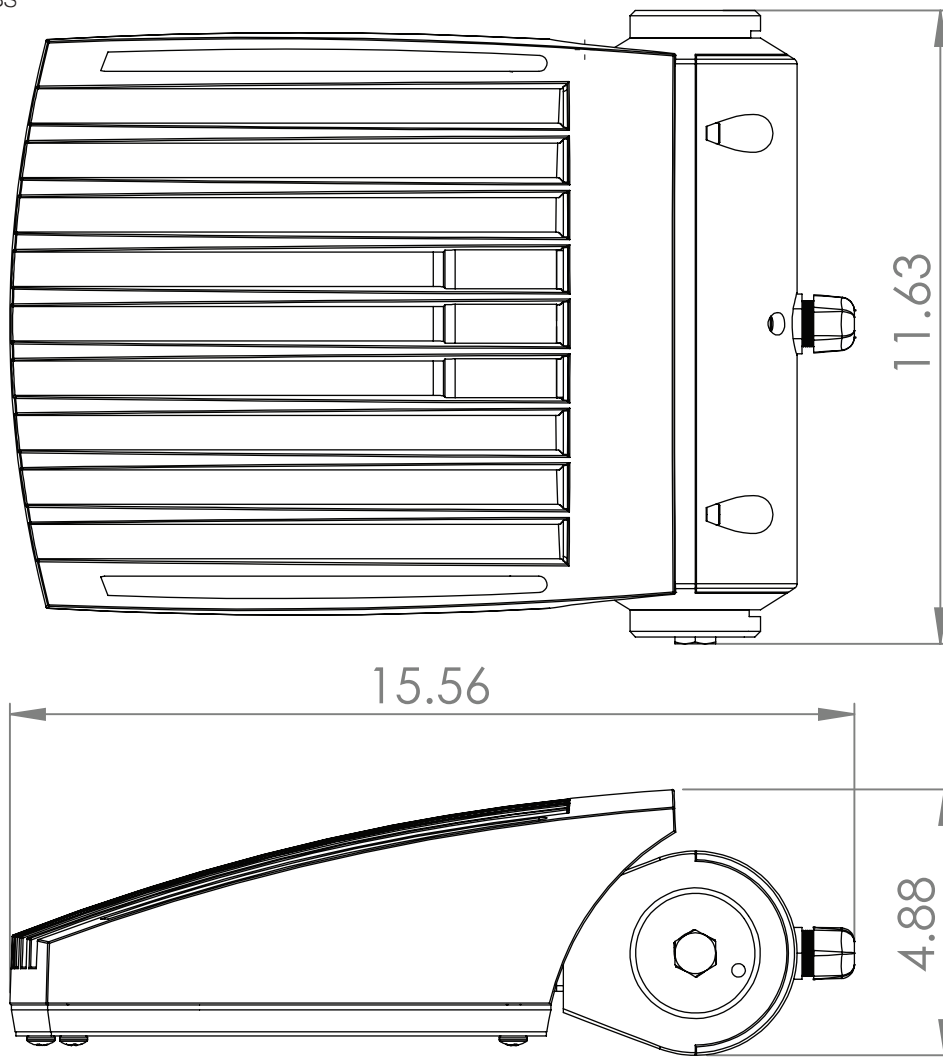
## Dimensions

**Width:** VSF-1 10.5

**Depth:** VSF-1 23.75

**Height:** VSF-1 4.75

**Weight:** 40 LBS



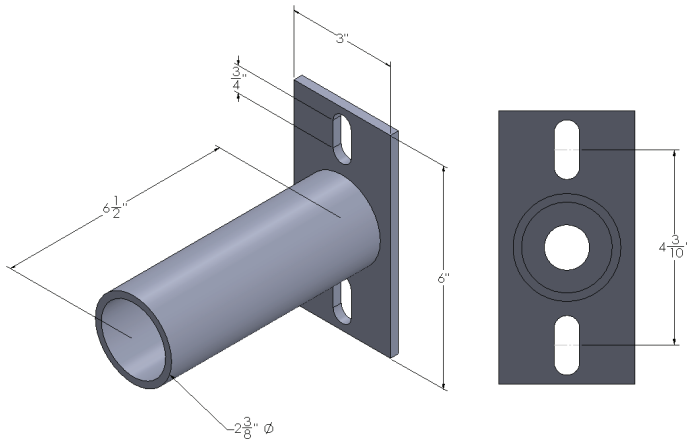
VSF 3K Lumen Data							VSF 3K LPW Data					
#LEDs	mA	7x5	7x7	FN	FM	Watts	#LEDs	mA	7x5	7x7	FN	FM
16	350	2274	2231	2443	2481	18	16	350	126	124	136	138
	530	3052	2993	3278	3329	26		530	117	115	126	128
	700	4028	3950	4326	4395	37		700	109	107	117	119
32	350	4580	4492	4919	4997	37	32	350	124	121	133	135
	530	6145	6026	6600	6704	52		530	118	116	127	129
	700	8111	7955	8711	8849	74		700	110	108	118	120
48	350	6870	6738	7379	7495	55	48	350	125	123	134	136
	530	9218	9040	9900	10057	78		530	118	116	127	129
	700	12166	11932	13067	13274	105		700	116	114	124	126
VSF 4K Lumen Data							VSF 4K LPW Data					
#LEDs	mA	7x5	7x7	FN	FM	Watts	#LEDs	mA	7x5	7x7	FN	FM
16	350	2394	2348	2571	2612	18	16	350	133	130	143	145
	530	3212	3150	3450	3505	26		530	124	121	133	135
	700	4240	4158	4554	4626	37		700	115	112	123	125
32	350	4821	4728	5178	5260	37	32	350	130	128	140	142
	530	6468	6344	6947	7057	52		530	124	122	134	136
	700	8538	8373	9170	9315	74		700	115	113	124	126
48	350	7232	7092	7767	7890	55	48	350	131	129	141	143
	530	9703	9516	10421	10586	78		530	124	122	134	136
	700	12807	12560	13755	13973	105		700	122	120	131	133
VSF 5K Lumen Data							VSF 5K LPW Data					
#LEDs	mA	7x5	7x7	FN	FM	Watts	#LEDs	mA	7x5	7x7	FN	FM
16	350	2297	2253	2468	2507	18	16	350	128	125	137	139
	530	3082	3023	3311	3363	26		530	119	116	127	129
	700	4069	3990	4370	4439	37		700	110	108	118	120
32	350	4626	4537	4969	5047	37	32	350	125	123	134	136
	530	6207	6087	6667	6772	52		530	119	117	128	130
	700	8193	8035	8799	8939	74		700	111	109	119	121
48	350	6939	6806	7453	7571	55	48	350	126	124	136	138
	530	9311	9131	10000	10158	78		530	119	117	128	130
	700	12289	12052	13199	13408	105		700	117	115	126	128

# VSF LED Specifications

## VSF Options

### Universal Mast Arm Fitter

**UMAP – The Universal Mast Arm Fitter** is a simple solution for retrofit applications where a fixture needs to mount to an existing pole, the UMAP is meant to be use to with knuckle mounts and also Mast Arm Fitters. The UMAP has a bolt slot ranging from 7" all the way down to 3.5". The UMAP also has a Round Pole Plate Adaptor (RPP) for mounting to round poles.



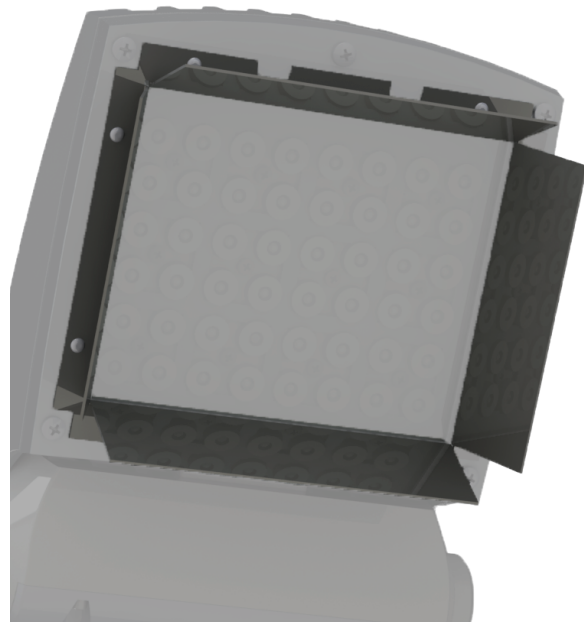
### Egg Crate Light Shield



### Adjustable Louver Light Shield



### Barn Door Light Shield



---

VSF Mounting Options

---

Trunnion Mount



Trunnion Mount is adjustable up to 90 degrees in 5 degree increments.

---

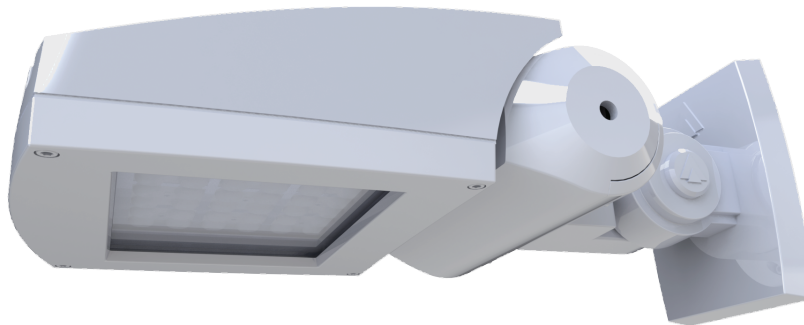
Knuckle Mount



An adjustable knuckle slip fits over a 2-3/8" Tenon, and allows for up to 90 degrees of vertical adjustment in 10 degree increments from horizontal, as well as full side to side adjustment with the knuckle mount.

---

Adjustable Wall Mount



A Wall Mount that allows for up to 70 degrees of vertical adjustment in 10 degree increments from horizontal.

---

Nipple Mount



An adjustable knuckle slip threads over a 3/4" NPT, and allows for up to 90 degrees of vertical adjustment in 10 degree increments from horizontal.