

BOW

LED Luminaire

The linear LED design of the BOW parking garage luminaire provides exceptional lighting performance and thermal management characteristics. The 2X LED light engine creates a unique visual appearance at lower light levels that benefit from increased perceived brightness. Isolating both LED arrays and the driver compartment increased the operating life of all components.

Key Features:

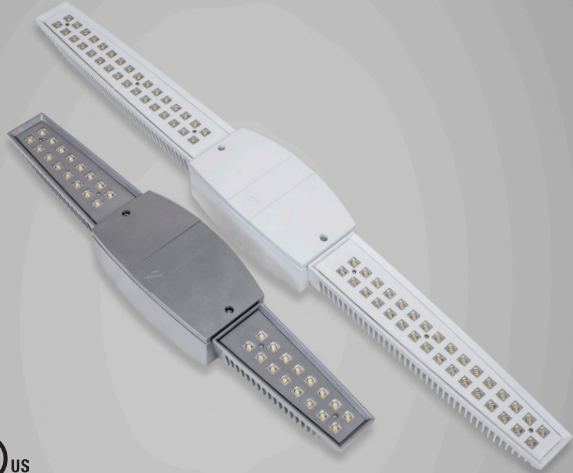
- Die Cast aluminum housing
- Dual integrated aluminum heat sinks
- 2X Light Engines
- Speed Mount Bracket
- 6 IES optics for Parking Garages
- 15,000+ Lumen package
- 175 to 700 Milliamps
- Replace 32W T8 – 250W MH
- cUL Listed
- IP 66 Rated

Bow LED

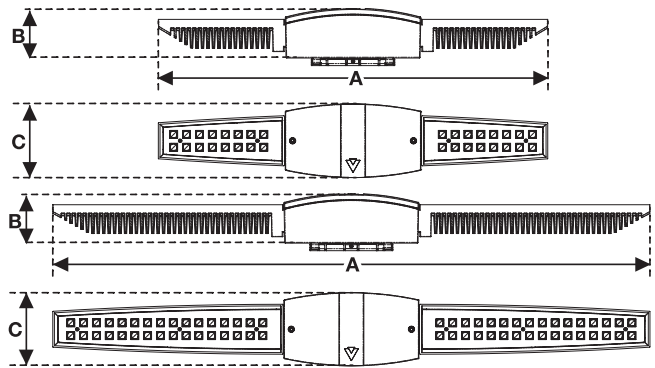
Project Name:

Catalog Number:

Type



Dimensional Drawings



| Fixture | A | B | C | Max. LEDs | Lbs |
|--------------|------|----|-----|-----------|-----|
| BOW-1 | 29½" | 4" | 5½" | 32 | 18 |
| BOW-2 | 46½" | 4" | 5½" | 64 | 22 |



Patent No. USD688403S

The new Bow LED luminaire from Visionaire, simplifies the task of selecting the best solution for LED parking garage lighting. The linear design of the luminaire, compliments the linear design of the pre-cast concrete coffer; creating an integrated lighting effect; and maximizes the perceived lighting coverage. It is an ideal replacement for the high-maintenance fluorescent fixtures of yesterday.

Six optical distribution patterns are available. Choose between 3000, 4000 or 5000 Kelvin temperature of the LED's.

A durable polyester powder coat finish is guaranteed for five years; and is available in standard or custom colors.

The LED light engines are die-cast aluminum with external heat radiating fins for maximum heat dissipation; and is available in two sizes with either 32 or 64 LEDs. The separate cast aluminum driver compartment allows the driver to operate cooler for long life. Available for pendant mounting, wall mounting or choose the shallow speed mount bracket.

The Bow LED series is an exceptional choice for parking garage lighting and other ceiling mount applications.

| Model | Optics | Source | Milliamps | Kelvin | Voltage | Mounting | Finish | Options |
|--------------|--------------------|---------------------------|------------------|---------------------------------|--|--|---|--|
| BOW-1 | Type I (T1) | # of LEDs 32 (32LC) | mA 350 (3) | 3000K *Warm white (3K) | 120-277 *Universal voltage (UNV) | Speed Mount Bracket™ Ceiling Mount (SMB) <small>This does not include provision for conduit access.</small> | Fixture Finish Smooth Black (SBK) | 0-10v Dimming Driver No Controls (DIM) |
| | Type II (T2) | | | | | | | |
| BOW-2 | Type III (T3) | 64 (64LC) | 530 (5) | 4000K *Neutral white (4K) | 347 (8) | Pendant Mount 12" (PM12) 24" (PM24) 36" (PM36) | Smooth White (SWH) Silver Metallic (SL) | Motion Sensor/Control Watt Stopper FSP-211 22' Distance @ 8' CLG HT Must specify Dimming Driver. (WSC) |
| | Type IV (T4) | | | | | | | |
| | Type V (T5) | | | | | | | |
| | Type V-W (T5W) | | | | | | | |
| | Wall Mount (WM) | | | | | | | |
| | | | | | | | Wireless Control (WC) Consult Factory | |
| | | | | | | | Bird Deterrent *Works with Pedant Mount only (BD) | |
| | | | | | | | Lightly Diffused Lens (LDL) | |

For more detailed information on mounting, wiring or installation instructions, please consult factory. If poles are not ordered with fixtures, please specify mounting requirements. This document contains proprietary information of Visionaire Lighting, LLC. Any use of this information requires the written approval of Visionaire Lighting, LLC. In keeping with our TQM policy of continuous improvement, Visionaire reserves the right to change any specifications contained herein without prior notice.