



BOW SX

LED Luminaire

QUALITY • PERFORMANCE • STYLE





**Modern innovation meets
unparalleled performance.**

BOW SX - LED Luminaire



The new BOW SX LED Series offers clean, functional styling that is defined by its sleek low profile design and rugged construction. It combines the latest LED performance and advanced LED thermal management technology, and provides lighting that is both energy efficient and aesthetically pleasing. Choose from 32 to 64 LEDs, that looks perfect with any of the LED configurations; thereby enabling the lighting designer to tailor the lighting to the application needs; while maintaining a uniform appearance throughout the entire project. Choose from a 3,500 to 17,000+ lumen package with life expectancy of well over 20 years.

For general wall mount and pedestrian areas, the BOW SX LED series brings contemporary LED lighting design into the 21st century.

Fixture Construction

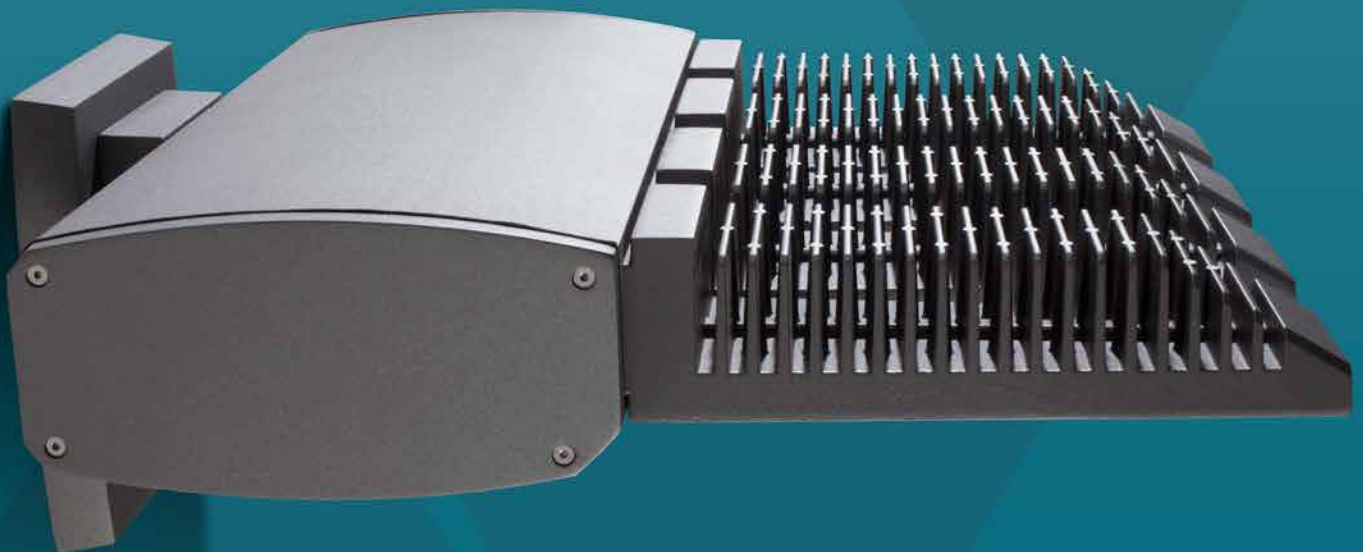
- Die Cast Aluminum light engines and extruded aluminum driver housing with integrated thermal heat sink for maximum thermal management of the LEDs for extreme long life of the LEDs.
- A Knuckle, Bolt-On Arm or Wall mounting design that simplifies the installation of the fixture.
- Engineered optical assemblies with six distribution patterns.

LED Technology

- 32 to 64 LEDs
- 350, 530, 700 or 1000 mA ratings.
- 3,500 to 17,000 lumen package available.
- 4000 or 5000 Kelvin for natural or white light.
- Full cutoff optics available in six distribution patterns.
- 69,000 to 126,000 hours or more of life for the LEDs

Applications

- The BOW SX LED Series is destined to become the standard for which LED area lights are measured. Simple flowing lines that house scalable LEDs that replace traditional HID fixtures; for a wide range of lighting applications. From shopping centers, auto dealerships to general parking lots; the BOW SX LED series is the transition of LED lighting into tomorrow.



Full Cutoff Optics

Available in nine different distribution patterns.

Die-Cast Aluminum Integral Heat Sink

Built to draw heat away from the LED junction points for extended LED life.

LED Light Engines

The LED light assemblies come in multiples of 16 (minimum 32 to maximum of 64 LEDs) and are field replaceable.

LED Driver

High performance with a power factor greater than 90%, and rated for -40° C operation.



Top View Detail



**Extruded Aluminum
Driver Compartment**

Separated from the LED array/heat sink structure; and provides easy driver access.

Button Photo cell

(Optional)

Surge Protector

10 kV Surge protector supplied as standard.

Knuckle Mount

Slips over 2 3/8" Tenon with adjustable
Increments of 10° up to max 90°

BOW SX LED

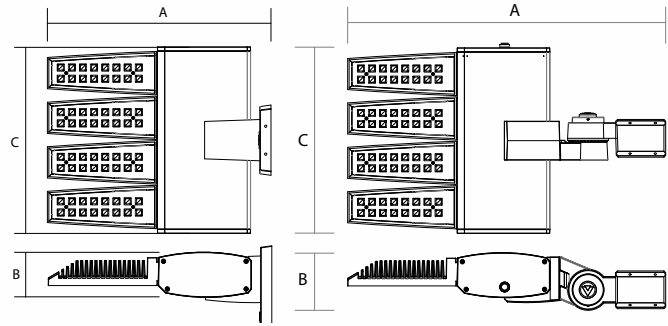
Project Name:

Catalog Number:

Type



Dimensional Drawings



Fixture	A	B	C	Max. Watts	Lbs
BSX-2	20" or 28.5"	5"	8.75"	111	15
BSX-3	20" or 28.5"	5"	12.75"	166	19
BSX-4	20" or 28.5"	5"	16.75"	222	24

The new BOW SX LED Series continues the unique contemporary design inspired by the sleek styling of the BOW family. Separating the extruded aluminum driver housing and the individual die-cast aluminum linear LED engines: optimize the life of the LEDs and the Driver(s); and maximizes the lumen output of the fixture.

A durable polyester powder coat finish is guaranteed for five years; and is available in standard or custom colors.

The BOW SX LED series is an exceptional choice for shopping centers, schools, office buildings, and general area lighting.

Each of the individual LED light engines come with 16 LEDs; for a max total of 64 LEDs. Nine optical distribution patterns are available.

Available in 4000 or 5000 Kelvin temperature.

Model	Optics	Source	Current	Kelvin	Voltage	Mounting	Finish	Options		
BSX-2	Type I (T1)	32 (32LC)	mA	4000K *Neutral white (4K)	120-277 *Universal Voltage (UNV)	Knuckle Mount *Slips over 2 3/8" Tenon with adjustable Increments of 10" (KM)	Bronze (BZ)	Button Type Photocell *Specify voltage. (PC120) (PC208) (PC240) (PC277)		
	Type II (T2)		350 (3)	5000K *Cool white (5K)	480 (5)		Black (BK)			
BSX-3	Type III (T3)	48 (48LC)	530 (5)	347 (8)	347 (8)	Bolt-On Arm 6" (BOA6)	Smooth Black (SBK)	Photocell & Receptacle *Specify voltage (PCR120) (PCR208) (PCR240) (PCR277)		
	Type IV (T4)		700 (7)				White (WH)			
BSX-4	Type IVA (T4A)	64 (64LC)	1000* (10)	*Test Data Pending, 1 Amp is not DLC listed	*Test Data Pending, 1 Amp is not DLC listed	Adjustable Wall Mount (UWM)	Smooth White (SWH)	Photo Receptacle (PER) *With shorting cap		
	Type V (T5)		Graphite (GP)				Round Pole Plate Adaptor For 4"Ø Pole (RPP4) For 5"Ø Pole (RPP5)			
	Type V-W (T5W)		Grey (GY)							
	Type Flood Narrow (FN)		Silver Metallic (SL)						Motion Sensor *Works with FSP-211 (WSC-8) 8" Mounting Height (WSC-20) 9-20" Mounting Height (WSC-40) 21-40" Mounting Height *For BOA Mounting Option Only	
	Type Flood Medium (FM)		Custom Color (CC)							Pole Mounted Motion Sensor (SBOR OEX) (SBOR ODP) *w/ photocell



NOTE: UNIT IS ADJUSTABLE FROM HORIZONTAL TO 90° UPWARD MAX WITH THE KNUCKLE MOUNT.

For more detailed information on mounting, wiring or installation instructions, please consult factory. If poles are not ordered with fixtures, please specify mounting requirements. This document contains proprietary information of Visionaire Lighting, LLC. Any use of this information requires the written approval of Visionaire Lighting, LLC. In keeping with our TQM policy of continuous improvement, Visionaire reserves the right to change any specifications contained herein without prior notice.

Housing

- The LED light engines are constructed of heavy-duty, die-cast aluminum, with external heat radiating fins.

Driver Compartment

- The separate driver housing is constructed of extruded aluminum, with cast aluminum end covers and stainless steel fasteners; for easy access to the LED driver(s); allowing for cooler operation and longer driver life. One-piece gasketing is utilized throughout the fixture for weather tight operation.

Thermal Management

- The BOW SX Series provides excellent overall thermal management by maximizing the fixture's heat sink capabilities. This enables the BOW SX Series to withstand higher ambient temperatures and drive currents without degrading LED life.
- The L70 test determines the point in an LEDs life when it reaches 70 percent of its initial output. The BOW SX Series LEDs have been determined to last a minimum of 100,000 hours in 25°C environments when driven at 350 mA.

Optical System

- The highest lumen output, LEDs are utilized in the BOW SX Series. IES distribution Types I, II, III, IV, IVA, V, V-W, FN & FM are available. LED light engines come in multiples of 16 LEDs.
- CRI values are 70.

Quali-Guard® Finish

- The finish is a Quali-Guard® textured, chemically pretreated through a multiple-stage washer, electrostatically applied, thermoset polyester powder coat finish, with a minimum of 3-5 millimeter thickness. Finish is oven-baked at 400 °F to promote maximum adherence and finish hardness. All finishes are available in standard and custom colors.

Finish is guaranteed for five (5) years.

Mounting

- An adjustable knuckle slip fits over a 2 3/8" Tenon, and allows for up to 90° degrees of vertical adjustment in 10° degree increments from horizontal, as well as full side to side adjustment with the knuckle mount.
- A round extruded 6" aluminum, Bolt -On Arm (BOA) with an in-pole nut plate. A Round Pole Plate Adapter (RPP) is required for mounting to round poles.
- A cast wall mount plate is available for wall mount applications.

Electrical Assembly

- The BOW SX Series is supplied with a choice of 350, 530, 700, or 1000 mA high-performance LED drivers, that accept 120v thru 480v, 50 Hz to 60 Hz, input. Power factor of 95%. Rated for -40 °C operations.
- 10 kV surge protector supplied as standard.
- 0-10v Dimming Driver supplied as standard

Warranty

- Five (5) year Limited Warranty on entire system, including finish. For full warranty information, please visit VisionaireLighting.com.

Options

- Button Type Photocell
- Photocell & Receptacle
- Photo Receptacle
- Round Pole Plate Adaptor
- Motion Sensor
- Pole Mounted Motion Sensor
- Universal Pole Mount Adaptor

Listings

BOW SX Series is UL Listed, suitable for wet locations.

IP65

Powder Coated Tough™.

DLC Listed



DesignLights Consortium (DLC) qualified Product. Some configurations of this product family may not be DesignLights Consortium (DLC) listed, please refer to the DLC qualified products list to confirm listed configurations. <http://www.designlights.com/>

Bolt-On Arm Detail



BSX BOA Mount Shown

EPA DATA	BSX-2	BSX-3	BSX-4
	.5	.7	.9

BOW SX 5K Lumen Data Lumen Data Chart Updated 08.14.15

# LEDs	mA	Type 1	Type 2	Type 3	Type 4	Type 4A	Type 5	Type 5W	Type FN	Type FM	Watts
32	350	4202	3849	3856	3870	4370	3906	3696	4445	4554	35
	530	6222	5700	5710	5730	6471	5784	5473	6582	6743	54
	700	7537	6905	6917	6942	7839	7007	6630	7974	8169	72
	1000	9873	9044	9061	9093	10268	9178	8684	10444	10700	111
48	350	6256	5731	5741	5762	6507	5815	5503	6618	6780	53
	530	8929	8180	8194	8224	9287	8300	7854	9446	9677	81
	700	11270	10325	10343	10380	11722	10476	9913	11922	12214	110
	1000	14763	13524	13548	13596	15354	13723	12985	15617	15999	166
64	350	8252	7560	7573	7600	8583	7671	7259	8730	8944	72
	530	11681	10701	10720	10758	12149	10859	10275	12357	12660	106
	700	14842	13597	13621	13669	15437	13797	13055	15701	16085	140
	1000	19443	17812	17844	17907	20222	18074	17102	20569	21072	222

Visit www.VisionaireLighting.com for up-to-the-minute chart information, including types not listed here.

* For 4000K multiply values by 0.95



Engineered to last a lifetime.

VISIONAIRE LIGHTING
Performance In A Whole New Light

19645 Rancho Way · Rancho Dominguez, CA 90220
310.512.6480
www.VisionaireLighting.com