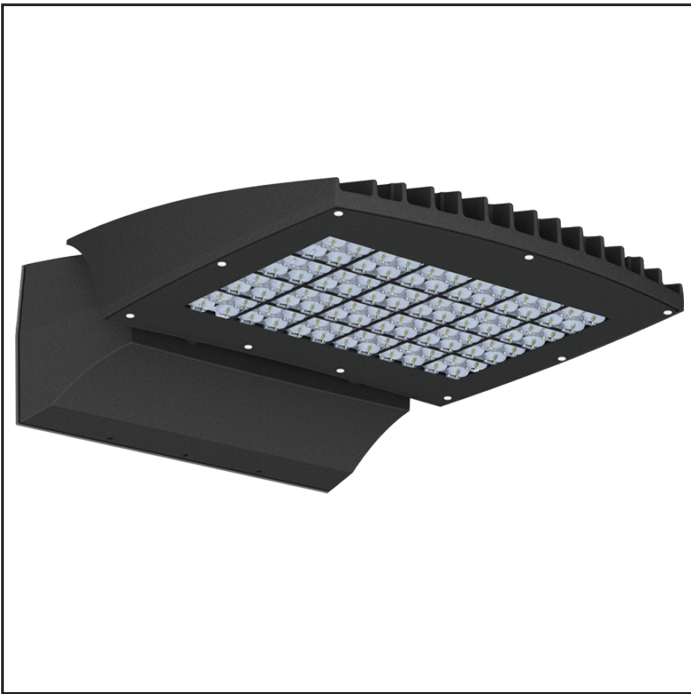


VMS LED Specifications



Project Name:

Catalog Number:

Type:

The **VMS LED** wall mount Series continues the unique contemporary design that is inspired by the V-Collection series. It combines LED performance and advanced LED thermal management technology and provides lighting that is energy efficient and aesthetically pleasing.

The LED performance and the driver's life are maximized by enclosing them in two separate cast aluminum housings. Easy access for mounting and maintenance.

The LED light assemblies come with 48, 64, 80 or 96 LEDs.

Six optical distribution pattern are available. Choose between 3000, 4000 or 5000 Kelvin temperature for the LEDs.

A durable polyester powder coat finish is guaranteed for five years; and is available in standard or custom colors.

The **VMS LED** Series is an exceptional choice for office complexes, schools, commercial buildings, and many architectural projects.

Ordering Information

MODEL	OPTICS	SOURCE	CURRENT	KELVIN	VOLTAGE	MOUNTING	FINISH	OPTIONS	OPTIONS
VMS-1	T1 Type 1	48LC	3 350mA	3K 3000K	UNV 120-277V	WM Wall Mount	BZ Bronze	PC-120	DIM 0-10v Dimming Driver
	T2 Type 2	64LC	5 530mA	4K 4000K	8 347V		BK Black	PC-208	EBPL Emergency Battery Pack
	T3 Type 3	80LC	7 700mA	5K 5000K	5 480V		SBK Smooth Black	PC-240	EBPL Emergency Battery Pack
	T4 Type 4	96LC	10 1050mA *Not Available in 96LC				WH White	PC-277 Button Type Photocell	EBPL Emergency Battery Pack
	FM Flood Medium						SWH Smooth White	WSC-8 Motion Sensor 8' Mounting Height	EBPL Emergency Battery Pack
	FN Flood Narrow						GP Graphite	WSC-20 Motion Sensor 9-20' Mounting Height *The WSC option will require (1) FSIR 100 remote for programming	EBPL-CLD Cold Weather Emergency Battery Pack
							GY Grey		EBPL Emergency Battery Pack
							SL Silver Metallic		EBPL Emergency Battery Pack
							CC Custom Color		EBPL Emergency Battery Pack
									BP Back Plate
									CLS Back Side Cutoff Louver Shield

Features & Specifications

VMS

Heatsink

Cast aluminum heatsink with integral cooling fins for thermal management.

Mounting/Driver Compartment

Durable two-piece cast aluminum driver compartment utilizes a quick mount/set screw mounting for ease of maintenance and sealed with a one-piece gasket.

Thermal Management

- The VMS series provides excellent thermal management by mounting the LEDs to the substantial heat sink of the housing. This enables the Luminaire to withstand higher ambient temperatures and driver currents without degrading LED life.
- The L70 test determines the point in an LEDs life when it reaches 70 percent of its initial output. The V Sconce series LEDs have been determined to last 100,000+ hours in 25° C environments when driven at 350 mA.

Optical System

- The highest lumen output LEDs are utilized in the VMS series. IES distribution Flood Narrow, Flood Medium, T1, T2, T3 and T4 are available. The optical system qualifies as IES full cutoff to restrict light trespass, glare and light pollution.
- CRI values are 70.

Quali-Guard® Finish

- The finish is a Quali-Guard® textured, chemically pretreated through a multiple-stage washer, electrostatically applied, thermoset polyester powder coat finish, with a minimum of 3-5 millimeter thickness. Finish is oven-baked at 400° F to promote maximum adherence and finish hardness. All finishes are available in standard and custom colors.
- Finish is guaranteed for five (5) years.

Electrical Assembly

- The VMS LED series is supplied with a choice of 350, 530, 700, 1000 mA high-performance LED drivers that accept 120v thru 480v, 50 Hz to 60 Hz, input.
- Power factor of 90%.
- Rated for -40°C operations.
- 10 kV surge protector supplied as standard.

Warranty

Five (5) year Limited Warranty on electrical components, Five (5) year on finish. For full warranty information, please visit visionairelighting.com

Options

- Button Type Photocell
- Motion Sensor
- 0-10 Volt Dimming Driver
- Up-Light Orientation
- Visionaire Wireless Control
 - Enables high end trim
 - Based on Zigbee wireless communication protocol

Listings

- The VMS is cUL Listed, suitable for wet locations
- IDA Certification
- Powder Coated Tough
- IP-65 Rated
- DLC Listed



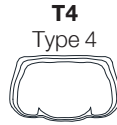
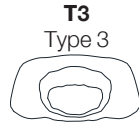
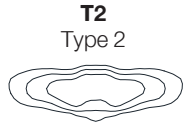
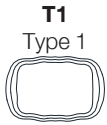
DesignLights Consortium (DLC) qualified Product. Some configurations of this product family may not be DesignLights Consortium (DLC) listed, please refer to the DLC qualified products list to confirm listed configurations. <http://www.designlights.org/>
3000K must be selected for IDA certification.

VMS-1 - Electrical Load (A)

Ordering Nomenclature	System Watts	120V	208V	240V	277V	347V	480V
VMS-1-T3-48LC-3	52	0.43	0.25	0.22	0.19	0.15	0.11
VMS-1-T3-48LC-5	78	0.65	0.38	0.33	0.28	0.22	0.16
VMS-1-T3-48LC-7	106	0.88	0.51	0.44	0.38	0.31	0.22
VMS-1-T3-48LC-10	161	1.34	0.77	0.67	0.58	0.46	0.34
VMS-1-T3-64LC-3	70	0.58	0.34	0.29	0.25	0.20	0.15
VMS-1-T3-64LC-5	107	0.89	0.51	0.45	0.39	0.31	0.22
VMS-1-T3-64LC-7	142	1.18	0.68	0.59	0.51	0.41	0.30
VMS-1-T3-64LC-10	218	1.82	1.05	0.91	0.79	0.63	0.45
VMS-1-T3-80LC-3	87	0.73	0.42	0.36	0.31	0.25	0.18
VMS-1-T3-80LC-5	132	1.10	0.63	0.55	0.48	0.38	0.28
VMS-1-T3-80LC-7	177	1.48	0.85	0.74	0.64	0.51	0.37
VMS-1-T3-80LC-10	272	2.27	1.31	1.13	0.98	0.78	0.57
VMS-1-T3-96LC-3	104	0.87	0.50	0.43	0.38	0.30	0.22
VMS-1-T3-96LC-5	157	1.31	0.75	0.65	0.57	0.45	0.33
VMS-1-T3-96LC-7	212	1.77	1.02	0.88	0.77	0.61	0.44

VMS LED Specifications

Photometric Optical Summary



Dimensions

Width: VMS-1 14"

Depth: VMS-1 19"

Height: VMS-1 6.5"

Weight: 36 LBS

