

Automotive Dealership Lighting



Table of Contents

Case Studies

Chino Hills Ford

Duval Acura

Morton Grove Audi

Oxnard Lexus

Elgin Honda

Devoe Subaru & Buick

Morton Grove Acura

Featured Products

VLX

VSC

VMF

BLX

BHB



Leaders in LED Technology

Visionaire Lighting is an industry leader with more than 15 years of experience transforming automotive dealerships with high-performance lighting design, one-of-a-kind optics, and modern energy saving LED technology. Visionaire fixtures feature cutting edge LED optics specifically designed for dealership lighting. Whether designing a custom retrofit project or managing new construction, Visionaire Lighting provides state-of-the-art technology and architectural styling for reliable results and superior customer satisfaction.

Visionaire Lighting manufacturers specification-grade LED outdoor lighting fixtures & poles. We specialize in Automotive Dealership Lighting, and have unique patented optical systems that are designed exclusively for the Automotive Dealership Market. Visionaire is always advancing its LED technology, and has enhanced capabilities in design, testing, manufacturing, and quality assurance.

Visionaire Lighting's Design and Applications Department utilizes cutting edge technology to provide our customers with complete engineering assistance and site-specific photometrics to layout your site perfectly and ensure complete satisfaction.

Please visit **www.visionairelighting.com**
for an overview of our complete line of
outdoor lighting products.



Project: Chino Hills Ford

VLX LED Luminaire



Case Study

Increased Light Levels & Uniformity

Project Description

In late 2014, The Chino Hills Ford dealership had just finished a major repositioning and facelift managed by Sauers Lopez Construction (SLC). SLC turned to Visionaire Lighting to perform an evaluation of the site lighting and recommend solutions to both modernize the site lighting and reduce the customer's operating costs.

"Visionaire was with us through the entire process. Their product allowed us to significantly reduce the total fixture quantity all while improving the overall site lighting quality. This reduction in fixtures and improved technology really drove the project financially. The customer saved money and procured a significant rebate to make the investment a win-win" said Clark Longhurst, President of Monterey Energy Inc.

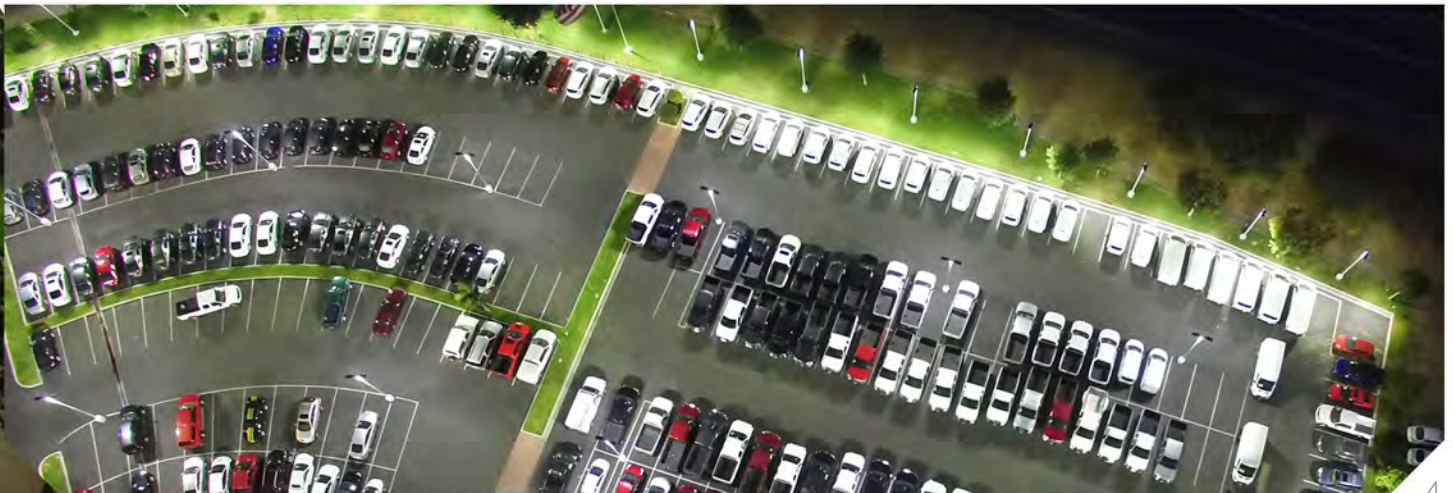


Summary

- VLX fixtures
- Replaced 151 fixtures total
- 42% overall fixture count reduction

Benefits

- 78% reduction in lighting energy costs
- \$2,500.00 in reduced annual maintenance costs
- \$42,100.00 – rebate received from utility
- 62.3% - customer's return on investment (ROI)
- \$628,629.00 – 10 year cash flow improvement
- 428 tons of CO2 reduced, enough to power 47 homes annually



Project: Duval Acura
BOW LX LED Luminaire



Case Study

Incentive & Lighting Upgrade

Project Description

Duval Acura was looking for a lighting upgrade to help them stand out, cut down on energy and draw in more clientele. After evaluation we knew just the cost effective solution that would return their ROI in energy savings and convert to higher sales.

Duval Acura changed out a total of 220 1000W HID fixtures and 32 400W floods. Using one of our highest performing and energy efficient LED luminaires, the BOW LX, we were able to replace quads with doubles and doubles with singles cutting down overall fixture count by 57% and the wattage by 74%. Duval Acura received a rebate of \$26,000 reducing cost and resulting in better lighting, more sales and reduced annual energy.



Summary

- Replaced with BOW LX fixtures
- 55% fixture count reduction
- Reduced wattage by 74%

Benefits

- \$26,000 JEA rebate
- Brighter lumen package
- Annual increase in sales



Project: Morton Grove Audi

VLX LED Luminaire



Case Study

Maintenance & Incentive

Project Description

When buying a car at McGrath Audi; a premier dealership in Chicago, not only are you buying excellence in a car, you are visiting a pristine automotive dealership. When renovating their lot, McGrath needed an LED fixture that was as aesthetically pleasing as the cars it was showing off. And of course the best fixture for the Job was our VLX.

McGrath changed out 101 fixtures from 1000 Watt Pulse Start, to 359 Watt Led Fixtures that included wireless controls, saving them 721 Watts per fixture. This 66% power reduction qualified McGrath for an utility incentive return of \$36,360 in total. Now, this product gives more light with less power as well as saving thousands of dollars in maintenance spending.



Summary

- VLX fixtures
- Replaced 101 fixtures total
- Replaced 1000 watt fixture with 359 watt LED fixtures

Benefits

- \$36,360 incentive return for power reduction
- Wireless controls for added control and savings
- Now saving thousands of dollars annually on maintenance



Project: Oxnard Lexus

BOW LX LED Luminaire



Case Study

Incentive & Lighting Upgrade

Project Description

On a street strewn with dealerships, Oxnard Lexus wanted a fixture that would help them stand out among the rest. Not only did they want to look brighter and newer, they wanted to save energy while also qualify for the utilities incentive program. Worried about sacrificing light for energy savings, they came to us with questions. We answered with the BLX.

In total 81 fixtures were changed. Replacing 1000 Watt HID fixtures with 614 Watt LED fixtures on the sales lot, and 444 Watt LED fixtures on the service lot. In doing so, Oxnard Lexus qualified for over \$20,000 in utility incentive rebates. In addition they are now saving an estimated \$37,672.56 annually in energy spending as well as thousands of dollars in maintenance.

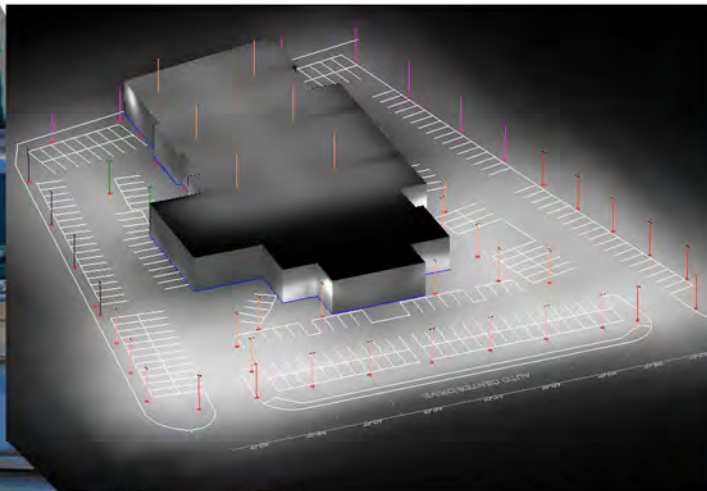


Summary

- BLX Fixtures
- Replaced 81 fixtures
- Replaced 1000 watt HID with 614 watt & 444 watt LED fixtures

Benefits

- Over \$20,000 in utility incentive rebates
- Almost \$38,000 in annual energy spending
- Thousands saved in annual maintenance



Project: Elgin Honda

VLX LED Luminaire



McG

Case Study

New Construction

Project Description

Elgin Honda of Illinois being new construction had a plethora of options when designing their lot. After deciding how the lot would be laid out, Elgin came to us wanting the most light with the least amount of fixtures, while still being able to emit the necessary lumens during the snowy weather months. They wanted to maximize efficiency, leave more space for their large inventory of cars, while being able to control the light during bad weather so they could always be seen from the road.

Our internal team of photometric specialist's was able to design a lot tailored to do just this using our VLX. Using our patented optics we were able to cut out almost half of the fixtures Elgin thought they would need with HID lighting. The layout offered them the fewest fixtures while giving them an immensely large Lumen output, while also working with our controls team to design controls for greater adjust-ability. Now, come rain, snow or nightfall, Elgin Honda now has the power to be seen at all times of the day as well as all times of the year.



Summary

- VLX fixtures
- 101 LED fixtures under 350 watts
- Wireless controls

Benefits

- Half as many fixtures for more lumens
- Initial installation savings
- Maintenance & power savings
- Wireless controls make bad weather less significant on sales



Project: Devoe Subaru & Buick

BOW LX LED Luminaire



Case Study

Lighting Upgrade

Project Description

In deciding what lights should replace their existing HID fixtures, Devoe Subaru & Buick knew they had to find the best of the best. Located right in the heart of one of the most expensive cities in the United States, they know extra effort is required to attract attention to their lot. Being ahead of the curve was important to them, and we provided them with our newest and brightest fixture to hit the market, our BLX.

Replacing old 1000 Watt HID fixtures, with 564 Watt LED BLX fixtures we were able to give them a significantly brighter lot, while also reducing their power consumption by almost 50%. Although initially Devoe wasn't concerned with cost, they were able to achieve higher lumens than were expected with a fraction of the operational power previously consumed on the lot.



Summary

- BLX fixtures
- Replaced 56 fixtures
- Replaced 1000 watt HID with 564 watt LED

Benefits

- Brighter lumen package
- 47% drop in power consumption annually
- Annual sales increase since BLX installation



Project: Morton Grove Acura

VLX LED Luminaire



Case Study

Maintenance & Incentive

Project Description

Acura is among the top three rated cars in consumer reports. When renovating their lot, Morton Grove knew they needed a fixture that competed just as highly in the outdoor lighting world as their cars did in the automotive world. They knew when replacing the lights in their lot, the fixtures chosen needed to ensure that the Acuras on their lot looked a cut above the rest, while having the ability to be more energy efficient as well. After being introduced to our very sleek, energy efficient yet very powerful VLX, the choice was clear.

Replacing 72 fixtures that were previously 1000 Watt Pulse Start with new 359 Watt LED VLX fixtures, we were able to reduce their wattage usage by 721 Watts per fixture. This equates to a 66% energy savings overall. Such high-energy savings combined with added wireless controls, Morton Grove was able to qualify for a utilities incentive return of over \$24,000. Morton Grove saved money and energy while still creating a beautifully lit lot that helps the newly waxed cars shine that much brighter.



Summary

- VLX fixtures
- Replaced 72 fixtures
- Replaced 1000W pulse start with 359W LED fixtures

Benefits

- Over \$24,000 in utility rebates
- Reduced energy usage by 66%
- Wireless controls give more lighting control





VLX

LED Luminaire

VLX is a high performance architectural LED luminaire with the flexibility to be used in all outdoor area lighting applications. Sleek design takes advantage of the low profile LED lamp technology. Superior thermal management allows for maximum LPW output. Die cast aluminum construction provides years of reliable operation. Six different IES light distribution patterns make the VLX ideal for any site.

Key Features:

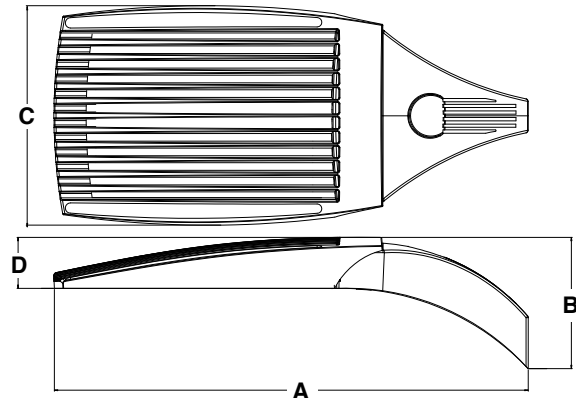
- Die cast aluminum housing
- Tool-less entry
- Integral heat sink
- Architecturally designed mounting arm
- Separate driver compartment
- Up to 1 amp operation
- 50,000+ lumen package
- 1,000W metal halide replacement
- Dimming capable



VLX LED



Dimensional Drawings



Fixture	A	B	C	D	Max. Watts	Lbs
VLX-1	36"	10.25"	15.5"	4"	421	58

The new VLX LED Series offers clean, functional styling that is defined by its sleek low profile design and rugged construction. It combines LED performance and advanced LED thermal management technology and provides outdoor lighting that is both energy efficient and aesthetically pleasing.

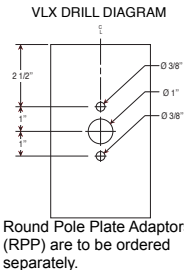
The LED's performance and the driver's life are maximized by enclosing them in two separate die cast aluminum housings. Easy tool-less access for mounting and maintenance.

The LED light assemblies come with 96 to 192 LEDs. Seven optical distribution patterns are available. Choose between 3000, 4000 or 5000 Kelvin temperature of the LEDs.

A durable polyester powder coat finish is guaranteed for five years; and is available in standard or custom colors.

The VLX LED series is an exceptional choice for commercial parking lots, office complexes, architectural projects, and other general lighting projects.

Model	Optics	Source	Current	Kelvin	Voltage	Mounting	Finish	Options
VLX-1	Type I (T1) 	# of LEDs 96 (96LC)	mA 350 (3)	3000K *Warm white (3K)	120-277 *Universal voltage (UNV)	Arm Mount (AM) Wall Mount (WM) *Cast Wall Plate (BAWP) to be ordered separately	Bronze (BZ) Black (BK) Smooth Black (SBK) White (WH) Smooth White (SWH) Graphite (GP) Grey (GY) Silver Metallic (SL) Custom Color (CC)	Photocell & Receptacle <small>*Specify voltage</small> (PCR120) (PCR208) (PCR240) (PCR277) (PCR480) 3 Pin Photo Receptacle (PER) <small>*With strobing cap</small> 5 Pin Photo Receptacle (5PINPER) <small>*With strobing cap</small> 7 Pin Photo Receptacle (7PINPER) <small>*With strobing cap *Requires Dimming Driver</small> Round Pole Plate Adaptor For 3" Pole (RPP3) For 4" Pole (RPP4) For 5" Pole (RPP5) Cast Wall Plate (BAWP) 0-10v Dimming Driver <small>No Controls</small> (DIM) Motion Sensor <small>*Works with FSP-211</small> (WSC-8) 8" Mounting Height (WSC-20) 9-20" Mounting Height (WSC-40) 21-40" Mounting Height <small>This option will require (1) FSR 100 remote for programming</small> Wireless Control <small>Consult Factory</small> (WC) Right Rotated Optics (RRO) Left Rotated Optics (LRO) Universal Pole Mount Adaptor (UPMA) Back Side Cutoff Louver Shield (CLS) Right Side Cutoff Louver Shield (RCLS) Left Side Cutoff Louver Shield (LCLS)
	Type II (T2) 	128 (128LC)	530 (5)	4000K *Neutral white (4K)	480 (5)			
	Type III (T3) 	160 (160LC)	700 (7)	5000K *Cool white (5K)	347 (8)			
	Type IV (T4) 	192 (192LC)						
	Type IV-A (T4A) 							
	Type V (T5) 							
	Type V-W (T5W) 							
	Type V-WR (T5WR) 							



VLX

LED Luminaire

192 LEDs 700mA 421W



Front Row 40' Spacing, Interior Row 65' Spacing

Calculation Summary

Label	CalcType	Units	Avg	Max	Min	Avg/Min	Max/Min
CalcPts	ILLUMINANCE	Fc	26.20	80.9	3.5	7.49	23.11
FRONT ROW	ILLUMINANCE	Fc	78.44	80.9	67.4	1.16	1.20
INTERIOR ROWS	ILLUMINANCE	Fc	21.87	28.4	9.1	2.40	3.12

Luminaire Schedule

Symbol	Qty	Label	Arrangement	Total Lamp Lumens	LLF	Description	BUG Rating	Lum. Watts
	6	B	ROTATED OPTICS	N.A.	0.950	VISIONAIRE VLX-1-T4A-192LC-7-5K-UNV-D180° RO @ 25° MTG. HT.	B4-U0-G3	421
	4	G	3 @ 120 DEGREES	N.A.	0.950	VISIONAIRE VLX-1-T5W-192LC-7-5K-UNV-T120° @ 25° MTG. HT.	B5-U0-G5	421

VLX 5K Lumen Data Lumen Chart Data updated 07.05.16

# LED's	mA	Type 1	LPW	Type 2	LPW	Type 3	LPW	Type 4	LPW	Type 4A	LPW	Type 5	LPW	Type 5W	LPW	Watts
192	350	31145	151	29080	141	29546	144	27851	135	31225	152	30281	147	30285	147	206
	530	41904	132	39126	123	39752	125	37472	118	42011	132	40742	128	40746	128	317
	700	51721	123	48293	115	49066	116	46251	110	51854	123	50287	119	50293	119	421

Visit www.VisionaireLighting.com for up-to-the-minute chart information, including types not listed here.

*For 4000K multiply values by 0.95 *For 3000K multiply values by 0.90

V LX

LED Luminaire

96 LEDs 1000mA 325W



Front Row 40' Spacing, Interior Row 65' Spacing

Calculation Summary

Label	CalcType	Units	Avg	Max	Min	Avg/Min	Max/Min
CalcPts	Illuminance	Fc	17.53	54.1	2.3	7.62	23.52
FRONT ROW	Illuminance	Fc	52.50	54.1	45.1	1.16	1.20
INTERIOR ROWS	Illuminance	Fc	14.63	19.0	6.1	2.40	3.11

Luminaire Schedule

Symbol	Qty	Label	Arrangement	Total Lamp Lumens	LLF	Description	BUG Rating	Lum. Watts
	6	B	ROTATED OPTICS	N.A.	0.950	VISIONAIRE VLX-1-T4A-96LC-10-5K-UNV-D180° RO @ 25' MTG. HT.	B3-U0-G3	325
	4	G	3 @ 120 DEGREES	N.A.	0.950	VISIONAIRE VLX-1-T5W-96LC-10-5K-UNV-T120° @ 25' MTG. HT.	B5-U0-G4	325

VLX 5K Lumen Data *Lumen Chart Data updated 07.05.16

# LED's	mA	Type 1	LPW	Type 2	LPW	Type 3	LPW	Type 4	LPW	Type 4A	LPW	Type 5	LPW	Type 5W	LPW	Watts
96	350	14940	145	13950	135	14173	137	13360	129	14979	145	14526	141	14528	141	103
	530	21928	138	20474	129	20802	131	19608	123	21984	138	21320	134	21322	134	159
	700	27638	128	25806	120	26219	122	24715	115	27709	129	26872	125	26875	125	215
	1000	34613	106	32318	99	32835	101	30952	95	34701	107	33653	104	33657	104	325

Visit www.VisionaireLighting.com for up-to-the-minute chart information, including types not listed here.

*For 4000K multiply values by 0.95 *For 3000K multiply values by 0.90



V-Sconce

LED Luminaire

The V-Sconce, part of our V-Collection is a high performance architectural LED luminaire to be used in outdoor lighting applications. Sleek design takes advantage of the low profile LED lamp technology. Superior thermal management allows for maximum LPW output. Its cast aluminum construction provides years of reliable operation. With three different IES light distribution patterns the V-Sconce is ideal for any site.

Key Features:

- Die cast aluminum housing
- Separate driver compartment
- 350-1000mA
- Six optic distribution patterns
- 120-480 Volt
- 14,000+ lumen package
- Dimming capable
- Button type photocell





VMF Flood LED Luminaire

The new VMF Flood LED Luminaire from Visionaire uses innovative heat sinking and cutting edge LED technology to deliver a wide range of light output that replaces 400W HID fixtures for flood or area lighting applications. Choose from 32 to 96 LEDs with up to 1000 mA drivers, for maximum lumen output of over 23,000+ lumens.

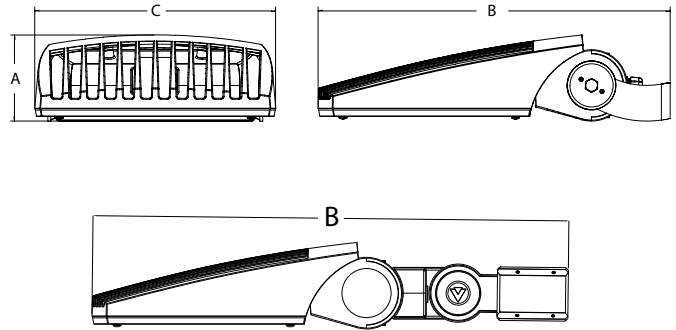
Key Features:

- Cast aluminum housing*
- Integral heat sink*
- Separate driver compartment*
- 23,000+ lumen package*
- 400W metal halide replacement*
- Dimming capable*

VMF LED



Dimensional Drawings



Fixture	A	B	C	Max. Watts	Lbs
VMF-1	5.5"	22/30	15.5	214	45

The new VMF LED Series offers clean, functional styling that is defined by its sleek low profile design and rugged construction. It combines LED performance and advanced LED thermal management technology and provides outdoor lighting that is both energy efficient and aesthetically pleasing.

The LED's performance and the driver's life are maximized by enclosing them in two separate cast aluminum housings. Sturdy Knuckle or Trunnion mount options.

The LED light assemblies come with 32 to 96 LED's. Nine optical distribution patterns are available. Choose between 3000, 4000 or 5000 Kelvin temperature of the LEDs.

A durable polyester powder coat finish is guaranteed for five years; and is available in standard or custom colors.

The VMF LED series is an exceptional choice for building lighting, sign lighting, and other flood lighting applications.

Model	Optics	Source	Current	Kelvin	Voltage	Mounting	Finish	Options
VMF-1	FN (FN)	# of LEDs 48 (48LC)	mA 350 (3)	3000K *Warm white (3K)	120-277 *Universal voltage (UNV)	Knuckle Mount *Slips over 2 3/8" Tenon with adjustable Increments of 10" (KM)	Bronze (BZ)	Button Type Photocell *Specify voltage (PC120) (PC208) (PC240) (PC277)
	FM (FM)	64 (64LC)	530 (5)	4000K *Neutral white (4K)	480 (5)	Trunnion Mount (TM)	Black (BK)	0-10v Dimming Driver (DIM)
	7x5 (7x5)	80 (80LC)	700 (7)	5000K *Cool white (5K)	347 (8)		Smooth Black (SBK)	Universal Mast Arm Plate (UMAP)
	7x7 (7x7)	96 (96LC)	*1000 (10) *Not available in 96LC			White (WH)	Egg Crate Light Shield (ECLS)	
						Smooth White (SWH)	Adjustable Louver Light Shield (ALLS)	
						Graphite (GP)	Barn Door Shield (BD)	
						Silver Metallic (SL)		
						Custom Color (CC)		



BOW LX

LED Luminaire

The BOW LX uses the successful BOW components to create an 17,000 to 110,000+ lumen site lighting package for high light level LED applications. A dedicated heat sink for each LED array maximizes the thermal management characteristics of the BOW LX. An adjustable knuckle slip fits over a 2 3/8" Tenon, and allows for up to 90° degrees of vertical adjustment in 10° degree increments from horizontal, as well as full side-to-side adjustment.

Key Features:

- *Die cast aluminum housing*
- *Integrated heat sink*
- *Field adjustable knuckle*
- *Quick Install*
- *1 Amp operations*
- *9 IES optic patterns*
- *17,000 to 110,000+ lumen packages*
- *3X, 4X, 6X or 8X LED Array design*
- *Ideal for Automotive and large site light projects*

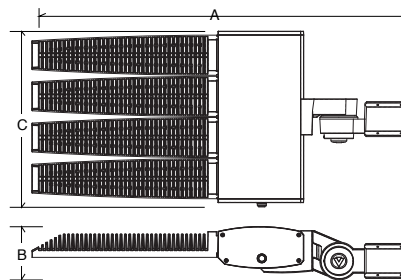


BOW LX LED



BLX-4 Shown with Decorative Shroud

Dimensional Drawings



Fixture	A	B	C	Max. Watts	Lbs
BLX-3	37"	5"	12"	338	38
BLX-4	37"	5"	17"	434	50
BLX-6	37"	5"	25"	648	75
BLX-8	37"	5"	33"	884	100

The new BOW LX LED Series continues the unique contemporary design inspired by the sleek styling of the BOW family. Separating the extruded aluminum driver housing and the individual die-cast aluminum linear LED engines: optimize the life of the LEDs and the Driver(s); and maximizes the lumen output of the fixture. The adjustable knuckle allows for up to 90° degrees of vertical adjustment for putting the light exactly where you need it.

Each of the individual LED light engines come with 32 LEDs; for a max total of 256 LEDs. Nine optical distribution patterns are available.

A unique Type 4-A automotive distribution pattern is available for the front rows of Auto Dealerships. Available in 3000, 4000 or 5000 Kelvin temperature.

A durable polyester powder coat finish is guaranteed for five years; and is available in standard or custom colors.

The BOW LX LED series is an exceptional choice for auto dealerships, shopping centers, commercial parking lots and general area lighting.

Model	Optics	Source	Current	Kelvin	Voltage	Mounting	Finish	Options
BLX-3	Type I (T1)	# Of LEDs 96 (96LC)	mA 350 (3)	3000K *Warm white (3K)	120-277 *Universal Voltage (UNV)	Knuckle Mount *Slips over 2 3/8" Tenon with adjustable increments of 10" (KM)	Bronze (BZ)	Photocell & Receptacle *Specify voltage (PCR120) (PCR208) (PCR240) (PCR277) 3 Pin Photo Receptacle (PER) *With shorting cap 5 Pin Photo Receptacle (5PINPER) *With shorting cap 7 Pin Photo Receptacle (7PINPER) *With shorting cap *Requires Dimming Driver Round Pole Plate Adaptor fits 3" OD - 5" OD (RPP) Motion Sensor *Works with FSP-211 (WSC-8) 8" Mounting Height (WSC-20) 9-20" Mounting Height (WSC-40) 21-42" Mounting Height *For BOA Mounting Option Only This option will require (1) FSIR 100 remote for programming
	Type II (T2)	128 (128LC)	530 (5)	4000K *Neutral white (4K)	480 (5)		Bolt-On Arm 6" (BOA6)	
BLX-4	Type III (T3)	192 (192LC)	700 (7)	5000K *Cool white (5K)	347 (8)	Wall Mount (WM) *BLX-3 & BLX-4 only *PCR & PER not available	Smooth Black (SBK)	Pole Mounted Motion Sensor (SBOR OEX) (SBOR ODP) *w/ photocell Universal Pole Mount Adaptor (UPMA) *Only available for BLX-3, BLX-4 & BLX-6 Decorative Shroud (DS) Back Side Cutoff Louver Shield (CLS) Right Side Cutoff Louver Shield (RCLS) Left Side Cutoff Louver Shield (LCLS)
	Type IV (T4)	256 (256LC)	1000 (10)				Adjustable Wall Mount (AWM) *BLX-3 & BLX-4 only	
BLX-6	Type IV-A (T4A)					Bolt-On Arm Wall Plate (BAWP) *BLX-3 & BLX-4 only Bolt-On Arm Wall Plate-XL (BAWP-XL) *BLX-6 and BLX-8 only	Smooth White (SWH)	
	Type V (T5)						Graphite (GP)	
	Type V-W (T5W)						Grey (GY)	
	Type FN (FN)						Silver Metallic (SL)	
	Type FM (FM)						Custom Color (CC)	

BOW LX

LED Luminaire

BOW LX 8 - 256 LEDs 1Amp 884W



Front Row 40' Spacing, Interior Row 65' Spacing

Calculation Summary

Label	CalcType	Units	Avg	Max	Min	Avg/Min	Max/Min
CalcPts	Illuminance	Fc	32.12	91.5	4.8	6.69	19.06
FRONT ROW	Illuminance	Fc	87.68	91.5	76.1	1.15	1.20
INTERIOR ROWS	Illuminance	Fc	28.05	37.7	11.4	2.46	3.31

Luminaire Schedule

Symbol	Qty	Label	Arrangement	Total Lamp Lumens	LLF	Description	BUG Rating	Lum. Watts
	6	B	SINGLE	N.A.	0.950	BLX-8-T4A-256LC-10-5K-UNV	B5-U0-G5	884
	4	G	2 @ 180 DEGREES	N.A.	0.950	BLX-8-T5W-256LC-10-5K-UNV	B5-U0-G5	884

BOW LX Lumen Data *Lumen Data Subject To Change. Lumen Data revised 05.16.16

CCT	#LEDs	mA	T1	lm/w	T2	lm/w	T3	lm/w	T4	lm/w	T4A	lm/w	T5	lm/w	T5W	lm/w	FM	lm/w	FN	lm/w	Watts
5K	256	530	63417	147	57284	133	58943	137	57484	134	65103	151	61723	143	59249	138	64528	150	65234	152	430
		700	78648	138	71042	125	73099	128	71290	125	80739	142	76547	134	73479	129	80025	140	80902	142	570
		1000	107210	121	96842	110	99646	113	97180	110	110060	125	104346	118	100164	113	109088	123	110282	125	884

Visit www.VisionaireLighting.com for up-to-the-minute chart information, including types not listed here.
 * For 4000K multiply values by 0.95 * For 3000K multiply values by 0.90

BOW LX LED Luminaire

BOW LX 6 - 192 LEDs 1Amp 648W



Front Row 40' Spacing, Interior Row 65' Spacing

Calculation Summary

Label	CalcType	Units	Avg	Max	Min	Avg/Min	Max/Min
CalcPts	Illuminance	Fc	20.20	57.5	3.0	6.73	19.17
FRONT ROW	Illuminance	Fc	55.14	57.5	47.8	1.15	1.20
INTERIOR ROWS	Illuminance	Fc	17.64	23.7	7.1	2.48	3.34

Luminaire Schedule

Symbol	Qty	Label	Arrangement	Total Lamp Lumens	LLF	Description	BUG Rating	Lum. Watts
B	6	B	SINGLE	N.A.	0.950	VISIONAIRE BLX-6-T4A-192LC-10-5K-UNV-SINGLE @ 25' MTG. HT.	B4-U0-G4	648
G	4	G	2 @ 180 DEGREES	N.A.	0.950	VISIONAIRE BLX-6-T5W-192LC-10-5K-UNV-D180° @ 25' MTG. HT.	B5-U0-G5	648

BOW LX Lumen Data *Lumen Data Subject To Change. Lumen Data revised 05.16.16

CCT	#LEDs	mA	T1	lm/w	T2	lm/w	T3	lm/w	T4	lm/w	T4A	lm/w	T5	lm/w	T5W	lm/w	FM	lm/w	FN	lm/w	Watts
5K	192	530	38141	120	34453	109	35450	112	34573	109	39155	123	37122	117	35635	112	38809	122	39234	124	318
		700	53931	127	48716	114	50126	118	48886	115	55365	130	52491	123	50387	118	54876	129	55477	130	426
		1000	67426	104	60905	94	62869	97	61118	94	69218	107	65625	101	62995	97	68607	106	69358	107	648

Visit www.VisionaireLighting.com for up-to-the-minute chart information, including types not listed here.
* For 4000K multiply values by 0.95 * For 3000K multiply values by 0.90



BOW High Bay LED Luminaire

The new Bow High Bay LED Luminaire from Visionaire uses innovative heat-sinking and cutting edge LED technology to deliver a wide range of light output that replaces 250W to 1000W+ HID and four to eight lamp T5/T8 high intensity fluorescent fixtures for High Bay applications. Choose from 2, 4, 6, or 8 independent die-cast light engines with up to 1000 mA drivers, for maximum lumen output of over 100,000 lumens.

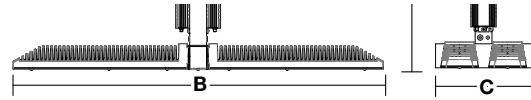
Key Features:

- Die cast aluminum housing*
- Integral heat sink*
- Wireless control & motion sensor capable*
- Separate driver compartment*
- 100,000+ lumen package*
- 1,000W+ metal halide replacement*
- Dimming capable*

BOW High Bay LED



Dimensional Drawings



Fixture	A	B	C	Max. LEDs	Lbs
BHB-2	38"	17"	5"	64	16
BHB-4	38"	17"	10"	128	30
BHB-6	38"	17"	15"	192	46
BHB-8	38"	17"	20"	256	59

The new BOW High Bay LED Luminaire from Visionaire uses innovative heat-sinking and cutting edge LED technology to deliver a wide range of light output that replaces 250W to 1000W HID and four to eight lamp T5/T8 high intensity fluorescent fixtures for High Bay applications. Choose from 2, 4, 6, or 8 independent die-cast light engines with up to 1000 mA drivers, for maximum lumen output of over 100,000+ lumens.

Choose from eight different distribution patterns including our L30° optics, types T-1 or T-2 for asymmetric distribution; T-5 or T-5W for symmetrical distribution; 30° diffused.

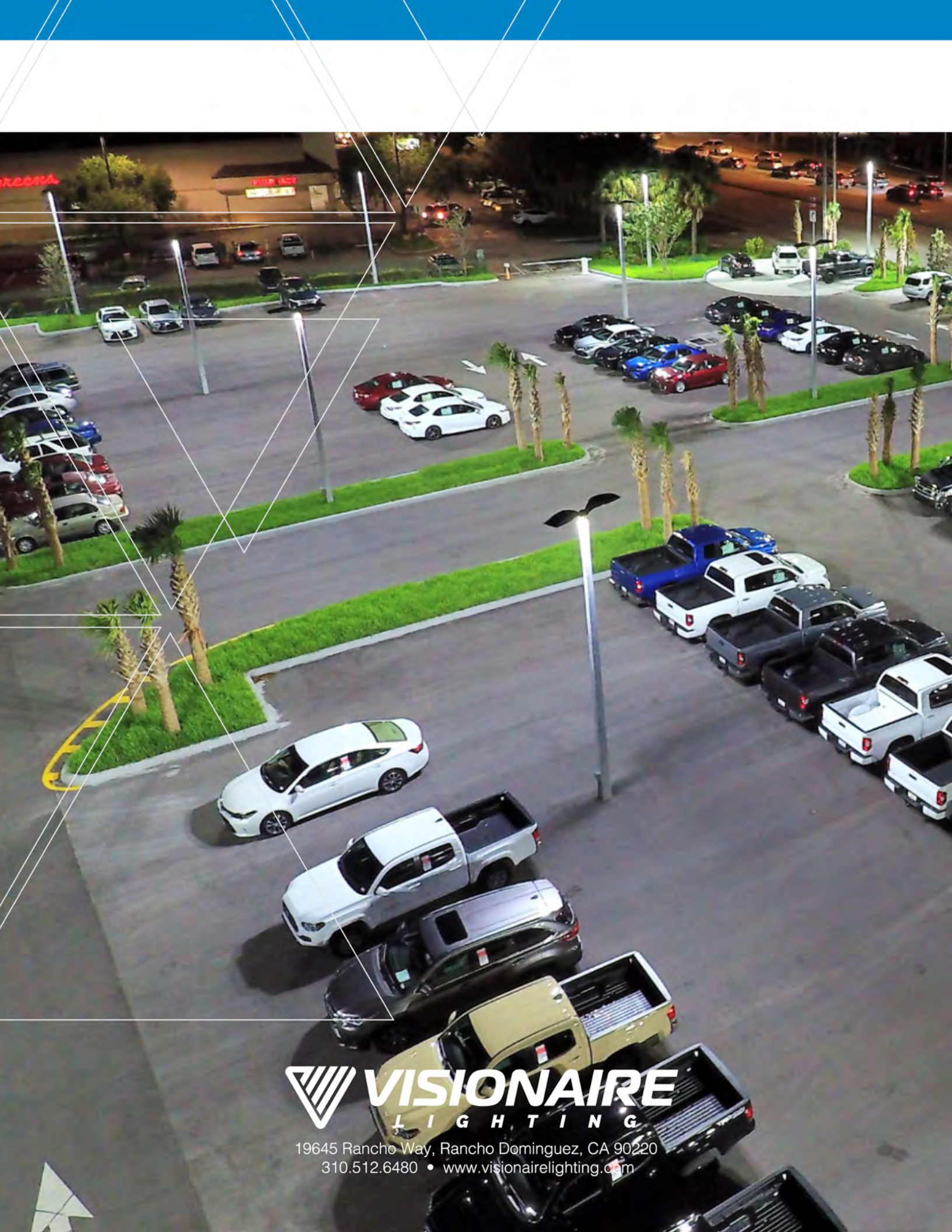
All aluminum construction throughout provides lasting durability for the BOW High Bay Series.

2, 4, 6, or 8 die-cast light engines with external cooling fins, for maximum heat dissipation for long life of the LEDs. The drivers are open to the air for cooler operation and longer life and are temperature rated for -40° C to +55° C operations.

LED Technology

64, 128, 192, or 256 LEDs available in 530, 700 or 1000 mA ratings. 3000, 4000 or 5000 Kelvin temperature are available.

Model	Optics	Source	Milliamps	Kelvin	Voltage	Mounting	Finish	Options	Mounting Accessories
BHB-2	Aisle Wide (AW)	# of LEDs 64 (64LC)	mA 350 (3)	3000K *Warm white (3K)	120-277 *Universal voltage (UNV)	Cable Mount (CBM) *Cable Ordered Separately *Hardware Not Included	White (WH)	Motion Sensor/FSP 211 Control Watt Stopper must specify dimming driver	Y-Cable With Hook (YH5) 5' Height (YH10) 10' Height (YH15) 15' Height
	Aisle Diffused (AD)								
BHB-4	Symmetrical Narrow 40° (SN)	128 (128LC)	530 (5)	4000K *Neutral white (4K)	347 (8)	1/2" Mount (CPM) *Threaded Rod And Nuts Not Included	Grey (GY)	*Works with FSP-211 (WSC-8) 8' Mounting Height (WSC-20) 9-20' Mounting Height (WSC-40) 21-40' Mounting Height	*To be ordered with CBM Mounting
	Symmetrical Narrow Diffused 40° (SND)								
BHB-6	Symmetrical Medium 90° (SM)	192 (192LC)	700 (7)	5000K *Cool white (5K)	480 (5)	3/4" Conduit Mount (CDM) *Conduit Not Included	This option will require (1) FSIR 100 remote for programming	Motion Sensor (MS-8) 8' Mounting Height (MS-20) 9-20' Mounting Height (MS-40) 21-40' Mounting Height	Hook (HK)
	Symmetrical Medium Diffused 90° (SMD)								
BHB-8	Symmetrical Wide 120° (SW)	256 (256LC)	1000 (10)					Wireless Control (WC) Consult Factory	*To be ordered with 3/4" CDM Mount
	Symmetrical Wide Diffused 120° (SWD)								
								Emergency Battery Pack (EBPL) *Universal Voltage only	
								Wire Guard (WG)	
								Cord *5' Cord comes as standard (10CD) 10' Cord (15CD) 15' Cord	
								Dimming Leads No Controls (DIM)	



 **VISIONAIRE**
L I G H T I N G

19645 Rancho Way, Rancho Dominguez, CA 90220
310.512.6480 • www.visionairelighting.com