

BOW LOW BAY LED Specifications



Project Name:

Catalog Number:

Type:

The new **BOW Low Bay LED** Luminaire from Visionaire uses innovative heat-sinking with all aluminum construction and cutting edge LED technology to deliver a wide range of light output that replaces 250W to 1000W HID and four to eight lamp T5/T8 high intensity fluorescent fixtures for Low Bay applications. Choose from 2 or 4 independent die-cast light engines with up to 1050 mA drivers.

Our sealed LED optics offer very uniform light distribution and are available in five distribution patterns of: Aisle Wide, Aisle Diffused, Symmetrical Narrow, Symmetrical Narrow Diffused, Symmetrical Medium, Symmetrical Medium Diffused, Symmetrical Wide and Symmetrical Wide Diffused. Choose from 3000, 4000, or 5000 Kelvin temperature of the LEDs.

Mounting options include chain or cable ready as standard, 1/2" threaded rod, and 3/4" conduit. Other options include Motion Sensors, Emergency battery pack and 10' & 15' cords.

2 or 4 die-cast light engines with external cooling fins, for maximum heat dissipation for long life of the LEDs. The drivers are open to the air for cooler operation. Temperature rated for -40° C to +65° C operations. Improved thermal management of the Light Bars, allows for up to 65° C ambient temperature ratings and -40° C minimum operating temperature; and over 100,000 hours of life at L70.

LED Technology
64 or 128 LEDs available in 350, 530, 700 or 1000mA ratings.
3000, 4000 or 5000 Kelvin temperature are available.

Ordering Information

MODEL	OPTICS	LEDS	CURRENT	KELVIN	VOLTAGE	MOUNTING	FINISH	OPTIONS	OPTIONS	MOUNTING ACCESSORIES
BLB-2	AW Aisle Wide	64LC	3 350mA	3K 3000K	UNV *120-277V	CBM Cable Mount *Cable Ordered Separately Hardware Not Included	WH White	WSC-8 Motion Sensor 8' Mounting Height	MS-40 Motion Sensor 21-40' Mounting Height	YH5 Y-Cable With Hook 5' Height
BLB-4	AD Aisle Diffused	128LC	5 530mA	4K 4000K	8 347V	CPM 3/8" Mount *Threaded Rod and Nuts Not Included	GY Grey	WSC-20 Motion Sensor 9-20' Mounting Height	VWC Visionaire Wireless Controls *Consult Factory	YH10 Y-Cable With Hook 10' Height
	SN Symmetrical Narrow 40°		7 700mA	5K 5000K	5 480V	CDM 3/4" Conduit Mount *Conduit Not Included		WSC-40 Motion Sensor 21-40' Mounting Height *WSC options will require (1) FSIR 100 remote for programming	EBPL Emergency Battery Pack	YH15 Y-Cable With Hook 15' Height *To be ordered with CBM Mounting
	SND Symmetrical Narrow Diffused 40°		10 1050mA 1050mA not offered with AD, SND, SWD, & SWD						WG Wire Guard	HK Hook *To be ordered with 3/4" CDM Mount
	SM Symmetrical Medium 90°								10CD 10' Cord	
	SMD Symmetrical Medium Diffused 90°								15CD 15' Cord	
	SW Symmetrical Wide 120°								MS-8 Motion Sensor 8' Mounting Height	DIM 0-10v Dimming Driver *Not Controls
	SWD Symmetrical Wide Diffused 120°								MS-20 Motion Sensor 9-20' Mounting Height	

Features & Specifications

BLB

Housing

The LED light engines are constructed of heavy-duty, die-cast aluminum, with external heat radiating fins. The driver compartment allows for easy access, cooler operation and longer life.

Thermal Management

The BOW Low Bay Series provides excellent overall thermal management by maximizing the fixture's heat sink capabilities. This enables the BOW Low Bay Series to withstand higher ambient temperatures and drive currents without degrading LED life. The BOW Low Bay Series has a low thermal resistance rating. The heat radiating fins create superior thermal management results.

The L70 test determines the point in an LEDs life when it reaches 70 percent of its initial output. The BOW Low Bay Series LEDs have been determined to last a minimum of 100,000 hours in 25°C environments when driven at 350 mA. See LED Data Chart for additional test results.

Optical System

The highest lumen output LEDs are utilized in the BLB Series. Distribution Types include Aisle Wide, Aisle Diffused, Symmetrical Narrow 40°, Symmetrical Narrow Diffused 40°, Symmetrical Medium 90°, Symmetrical Medium Diffused 90°, Symmetrical Wide 120° and Symmetrical Wide Diffused 120°. LED light assemblies come in multiples of 32 LEDs.

CRI values are 70.

Quali-Guard® Finish

• The finish is a Quali-Guard® textured, chemically pretreated through a multiple-stage washer, electrostatically applied, thermoset polyester powder coat finish, with a minimum of 3-5 millimeter thickness. Finish is oven-baked at 400° F to promote maximum adherence and finish hardness. All finishes are available in standard and custom colors.

• Finish is guaranteed for five (5) years.

Mounting

Available standard for:

- Cable Mount
- 1/2" Threaded Rod
- 3/4" Conduit
- Trunnion Mount

Electrical Assembly

The BOW Low Bay Series is supplied with a choice of 350, 530, 700 or 1000 mA high-performance LED drivers that accept 120v thru 480v, 50 Hz to 60 Hz, input. Power factor of 90%.

Rated for -40 °C to +65 °C temperature operations.

10 kV surge protector supplied as standard.

5' Cord as standard.

- 0-10v Dimming Driver is standard.

Warranty

• Five (5) year Limited Warranty on electrical components, Five (5) year on finish. For full warranty information, please visit visionairelighting.com.

Options

- Motion Sensor/Control Watt Stopper FSP-211
- Motion Sensor (On/Off)
- Wireless Control
- Emergency Battery Pack
- Wire Guard
- Cord
- Dimming Leads

Listings

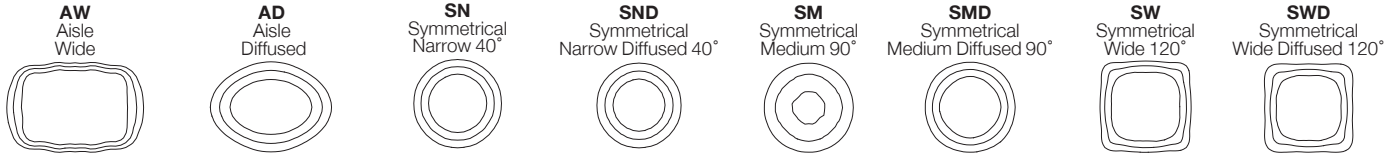
- UL/cUL listed UL 1598 Suitable for damp locations
- UL 8750 LED equipment in Lighting Products
- Powder Coated Tough™
- DLC Listed



DesignLights Consortium (DLC) qualified Product. Some configurations of this product family may not be DesignLights Consortium (DLC) listed, please refer to the DLC qualified products list to confirm listed configurations. <http://www.designlights.org/>
3000K must be selected for IDA certification.

BOW LOW BAY LED Specifications

Photometric Optical Summary



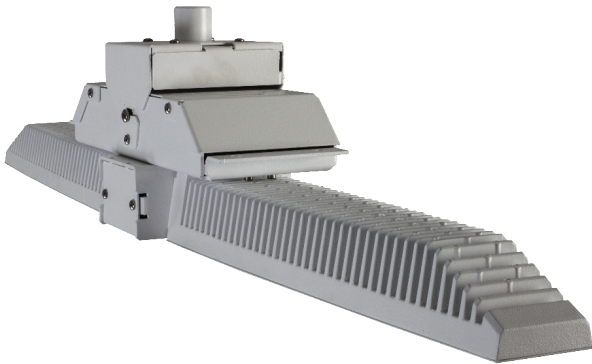
Dimensions

Width: BLB-2 40"
BLB-4 40"

Depth: BLB-2 6"
BLB-4 11"

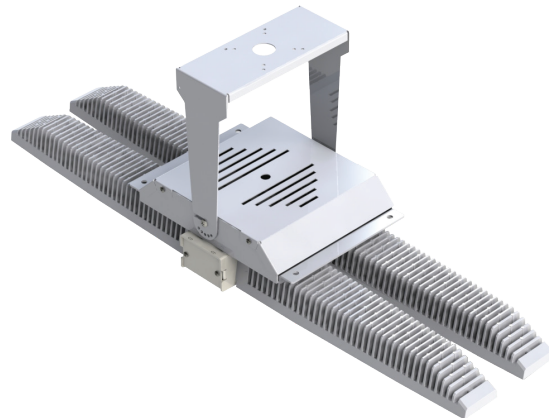
Height: BLB-2 5"
BLB-4 5"

BLB-2 3/4" Conduit Mount



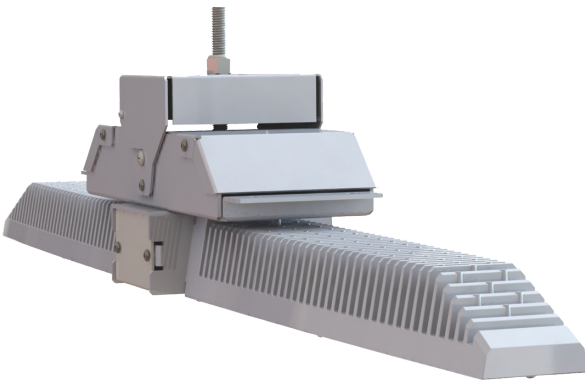
16LBS

BLB-4 Trunnion Mount



30LBS

BLB-2 1/2" Mount



16LBS

BLB-4 Cable Mount



30LBS

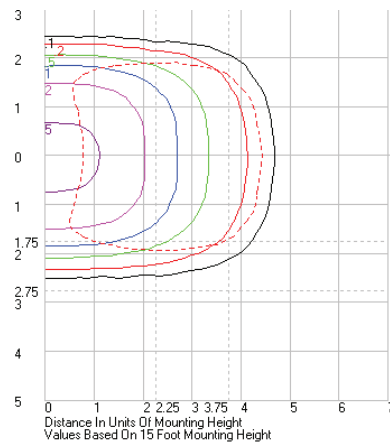
LED Specifications **BLB**

BLB 3K Lumen Data										
# LEDs	mA	Aisle Wide	Aisle Diffused	SN 40°	SND 40°	SM 90°	SMD 90°	SW 120°	SWD 120°	Watts
64	350	10710	9391	10735	8547	10054	8263	9356	7970	71
	530	15787	13842	15824	12599	14820	12180	13791	11749	109
	700	19452	17056	19498	15524	18261	15007	16992	14476	143
	1000	29327		29396		27531		25619		218
128	350	20286	17787	20334	16189	19044	15650	17721	15097	138
	530	30203	26482	30274	24104	28353	23301	26384	22477	220
	700	37653	33014	37741	30049	35347	29049	32892	28021	288
	1000	50619		50737		47518		44218		430
BLB 4K Lumen Data										
# LEDs	mA	Aisle Wide	Aisle Diffused	SN 40°	SND 40°	SM 90°	SMD 90°	SW 120°	SWD 120°	Watts
64	350	11274	9885	11300	8997	10583	8698	9848	8390	71
	530	16618	14571	16657	13262	15600	12821	14517	12367	109
	700	20476	17953	20524	16341	19222	15797	17887	15238	143
	1000	30871		30943		28980		26967		218
128	350	21354	18723	21404	17041	20046	16474	18654	15891	138
	530	31793	27876	31867	25372	29845	24528	27773	23660	220
	700	39635	34752	39728	31631	37207	30578	34623	29496	288
	1000	53283		53408		50019		46545		430
BLB 5K Lumen Data										
# LEDs	mA	Aisle Wide	Aisle Diffused	SN 40°	SND 40°	SM 90°	SMD 90°	SW 120°	SWD 120°	Watts
64	350	10818	9486	10844	8634	10156	8346	9451	8051	71
	530	15947	13940	15984	12726	14970	12303	13930	11867	109
	700	19649	17228	19695	15681	18445	15159	17164	14622	143
	1000	29623		29693		27809		25878		218
128	350	20491	17967	20539	16353	19236	15809	17900	15249	138
	530	30508	26750	30580	24347	28640	23537	26651	22704	220
	700	38033	33348	38123	30353	35704	29342	33224	28304	288
	1000	51130		51250		47998		44665		430
BLB 3K Lumen Per Watt Data										
# LEDs	mA	Aisle Wide	Aisle Diffused	SN 40°	SND 40°	SM 90°	SMD 90°	SW 120°	SWD 120°	Watts
64	350	151	132	151	120	142	116	132	112	71
	530	144	127	145	115	135	111	126	107	109
	700	136	119	136	108	128	105	119	101	143
	1000	135	118	135		126		118		218
128	350	147	129	147	117	138	113	128	109	138
	530	137	120	138	110	129	106	120	102	220
	700	131	115	131	104	123	101	114	97	288
	1000	118		118		111		103		430
BLB 4K Lumen Per Watt Data										
# LEDs	mA	Aisle Wide	Aisle Diffused	SN 40°	SND 40°	SM 90°	SMD 90°	SW 120°	SWD 120°	Watts
64	350	159	139	159	127	149	123	139	118	71
	530	152	133	152	121	143	117	133	113	109
	700	143	125	143	114	134	110	125	106	143
	1000	142		142		133		124		218
128	350	155	136	155	123	145	119	135	115	138
	530	145	127	145	115	136	111	126	108	220
	700	138	121	138	110	129	106	120	102	288
	1000	124		124		116		108		430
BLB 5K Lumen Per Watt Data										
# LEDs	mA	Aisle Wide	Aisle Diffused	SN 40°	SND 40°	SM 90°	SMD 90°	SW 120°	SWD 120°	Watts
64	350	152	134	153	122	152	121	142	117	71
	530	146	127	146	116	132	120	123	115	109
	700	137	120	138	110	124	113	116	109	143
	1000	136		136		123		115		218
128	350	148	130	149	118	132	119	123	115	138
	530	139	122	139	111	132	120	123	115	220
	700	132	116	132	105	139	111	130	107	288
	1000	119		119		122		113		430

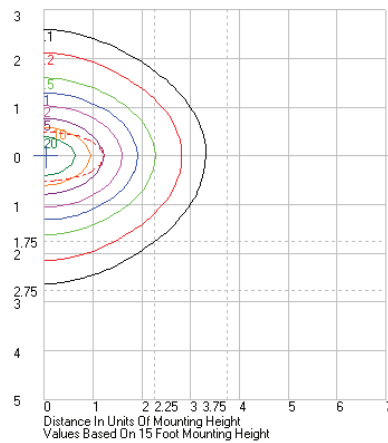
BLB LED Specifications

Photometrics/ISO Line

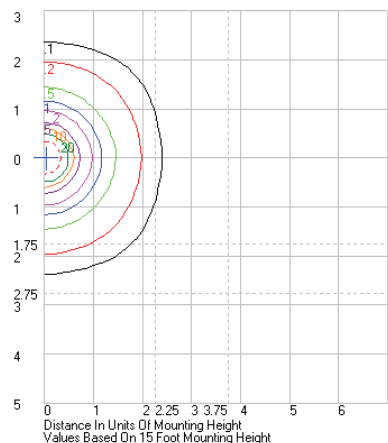
Aisle Wide



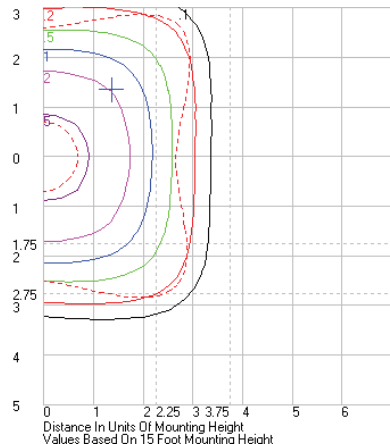
Aisle Diffused



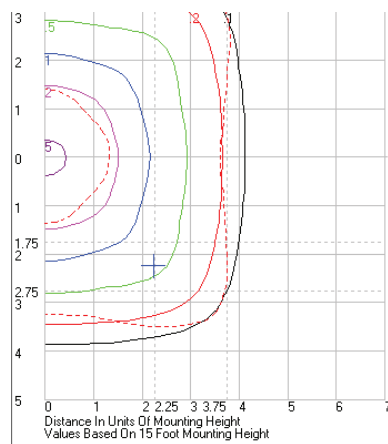
Symmetrical Narrow 40°



Symmetrical Medium 90°



Symmetrical Wide 120°

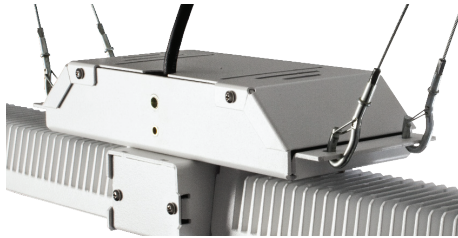


The BOW Low Bay Array series optical lens system enables LEDs to provide precise illumination where needed. Lenses are designed for commercial & industrial applications where mounting height, fixture spacing & light levels help determine lens selection. The following table outlines lens options and suggested application.

Optic Application Guide		
	Mounting Height	Space Type
Aisle Wide	15-25'	Isle with storage racks
Aisle Diffused	26+	Isle with storage racks
Symmetrical Narrow 40°	41'+	Open Floor Space
Symmetrical Medium 90°	26'-40	Open Floor Space
Symmetrical Wide 120°	15-25'	Open Floor Space

Mounting Options

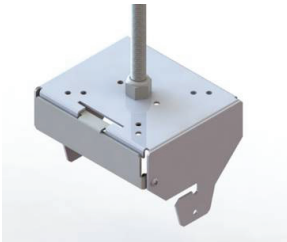
Cable Mount



Cable Mount

Available on with Bow Low Bay configurations
Y Cable With Hook to be ordered as a mounting accessory

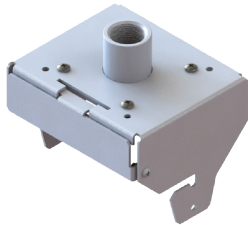
3/8" Threaded Rod Mount



3/8" Threaded Rod Mount

Available with Bow Low Bay size 2 and 4
Attaches to 3/8" threaded rod (Rod and hardware not included)

3/4" Conduit Mount



3/4" Conduit Mount

Available on with Bow Low Bay configurations
Attaches to 3/4" threaded conduit or hook (Conduit and hardware not included)

Mounting Accesories

Y-Cable With Hook



Y-Cable With Hook

Available on with Bow Low Bay configurations
Must order with Cable Mount option
Available in 5', 10' and 15'

Hook

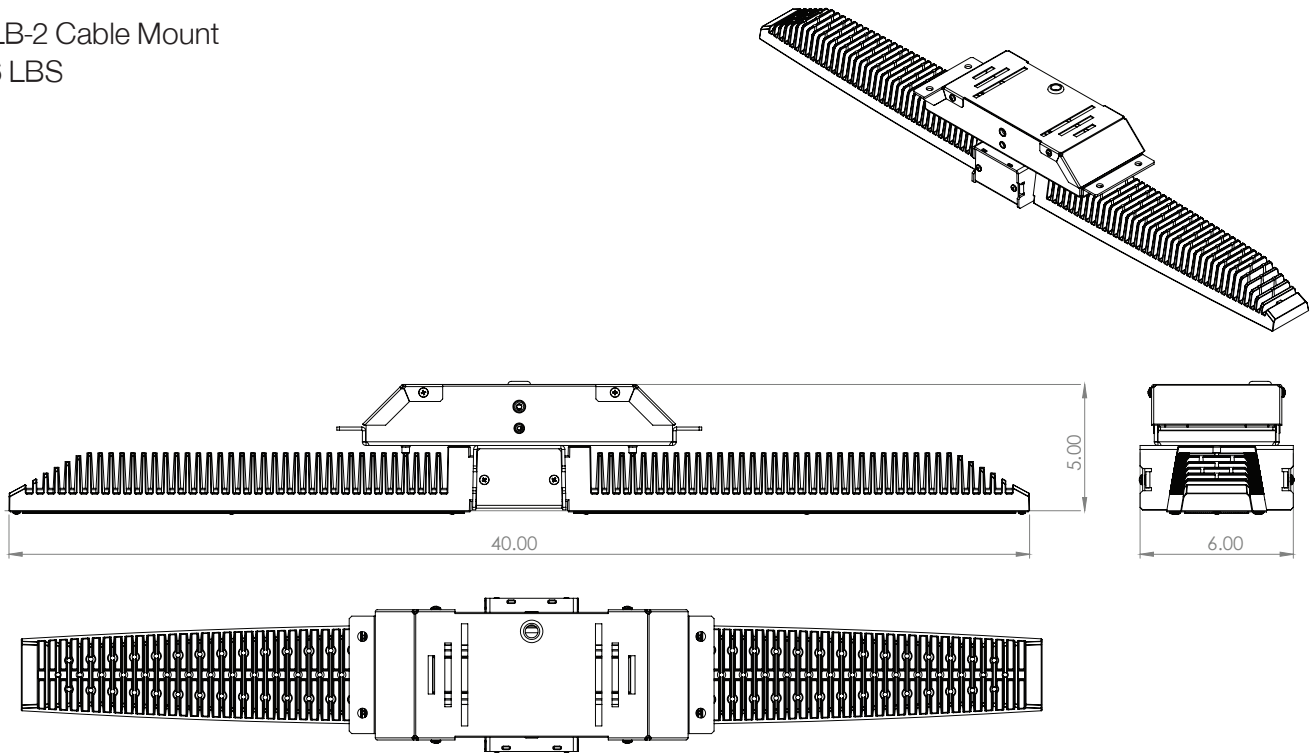


Hook

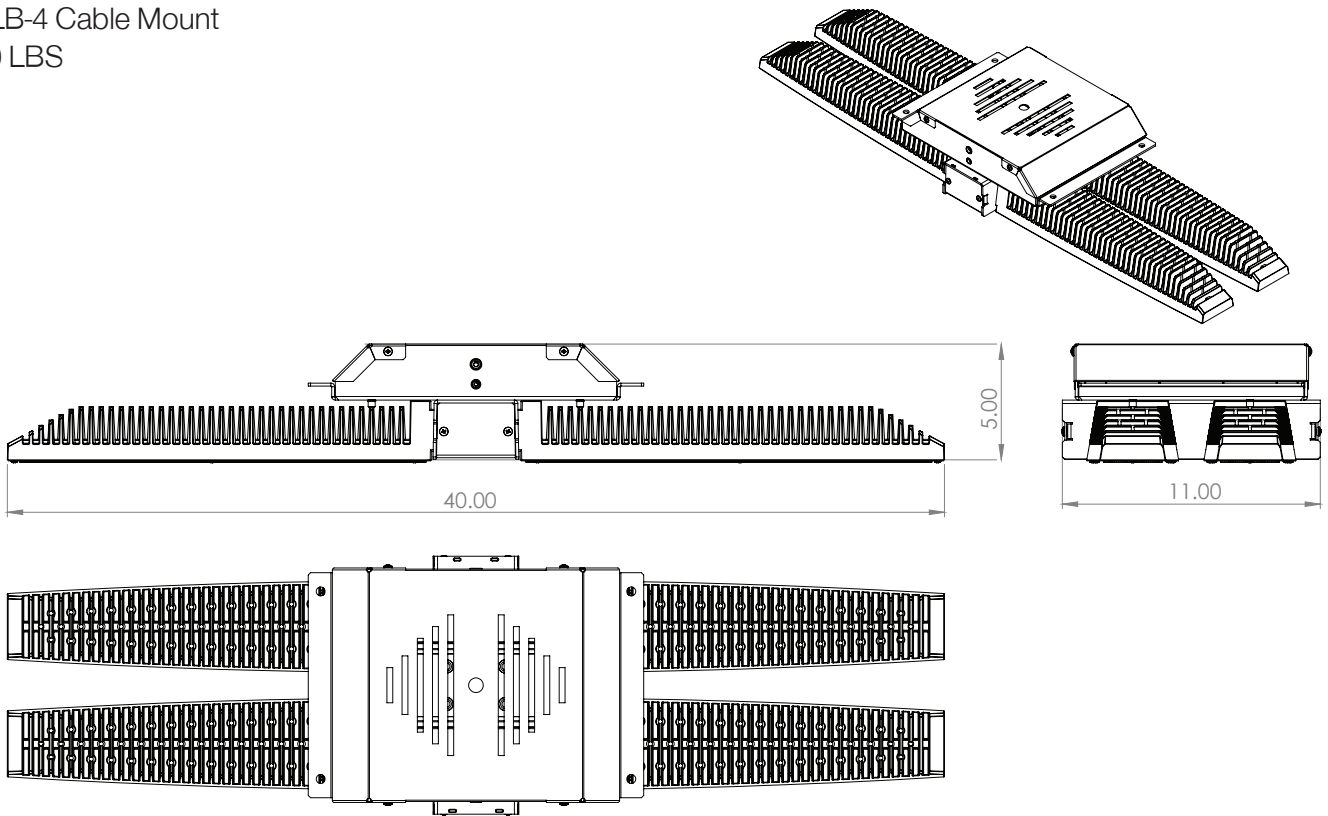
Available on Bow Highbay configurations
Must order 3/4" Conduit Mount with the Hook for a Mounting Accessory

BLB LED Specifications

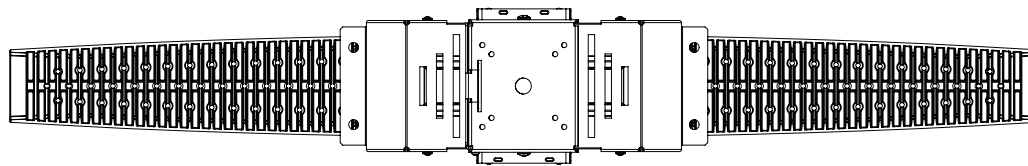
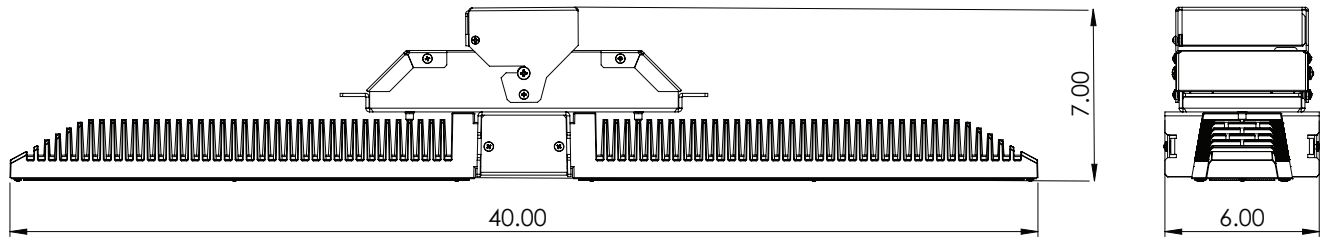
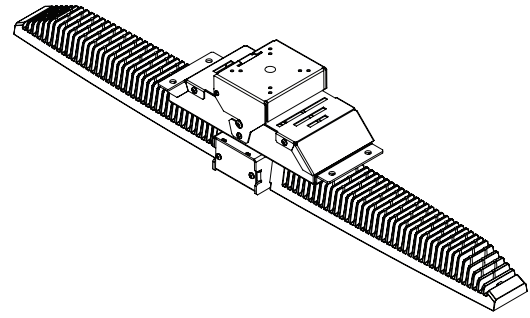
BLB-2 Cable Mount
16 LBS



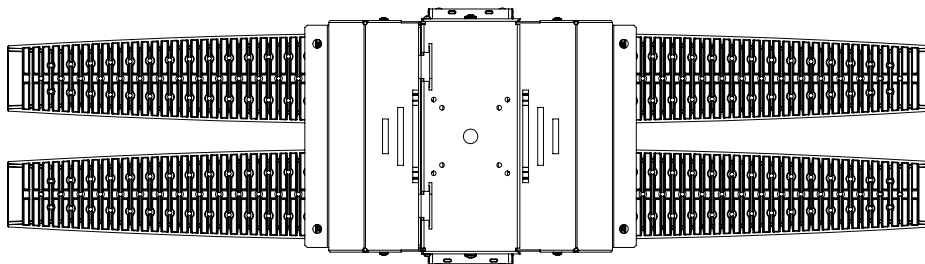
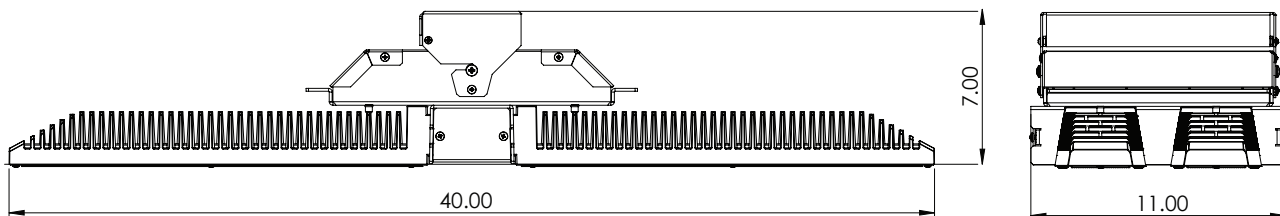
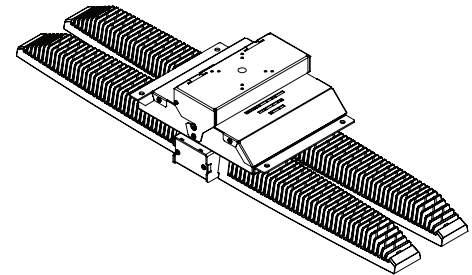
BLB-4 Cable Mount
30 LBS



BLB-2 1/2" Mount
16 LBS

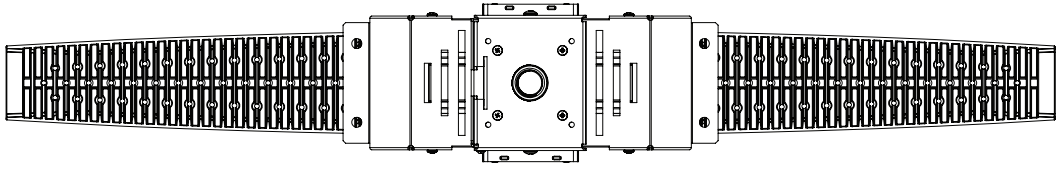
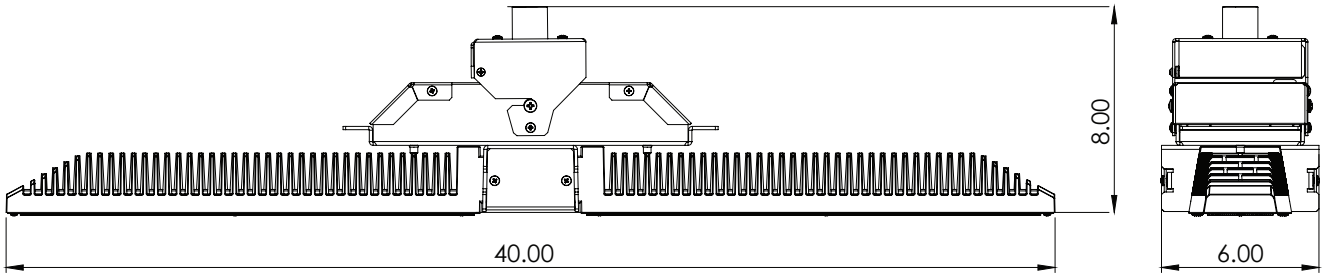
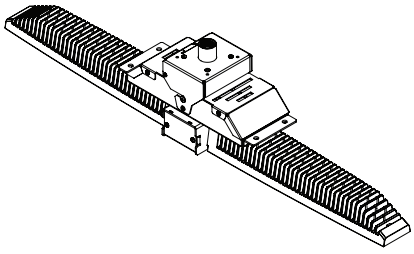


BLB-4 1/2" Mount
30 LBS

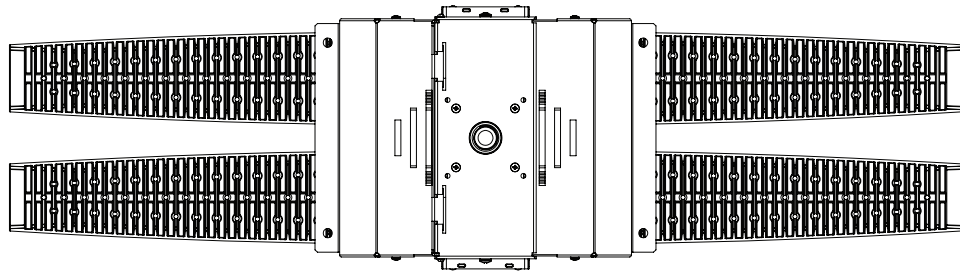
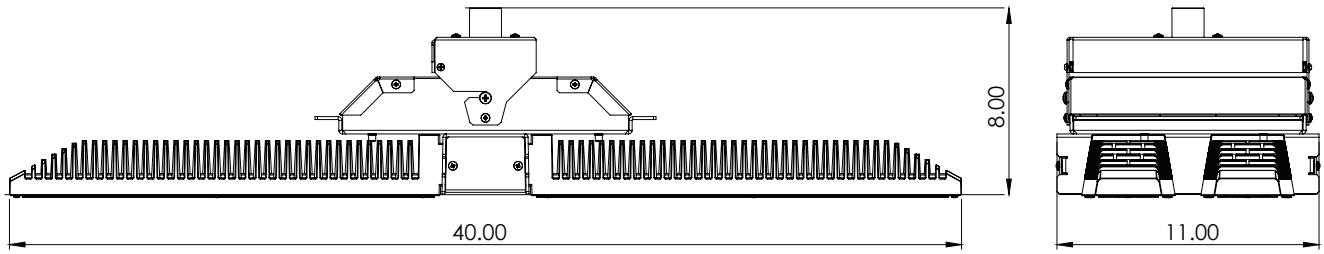
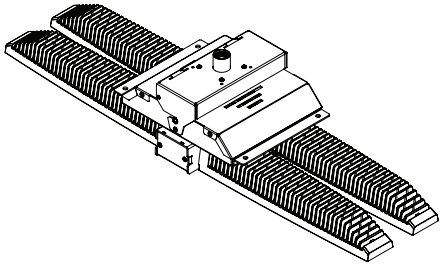


BLB LED Specifications

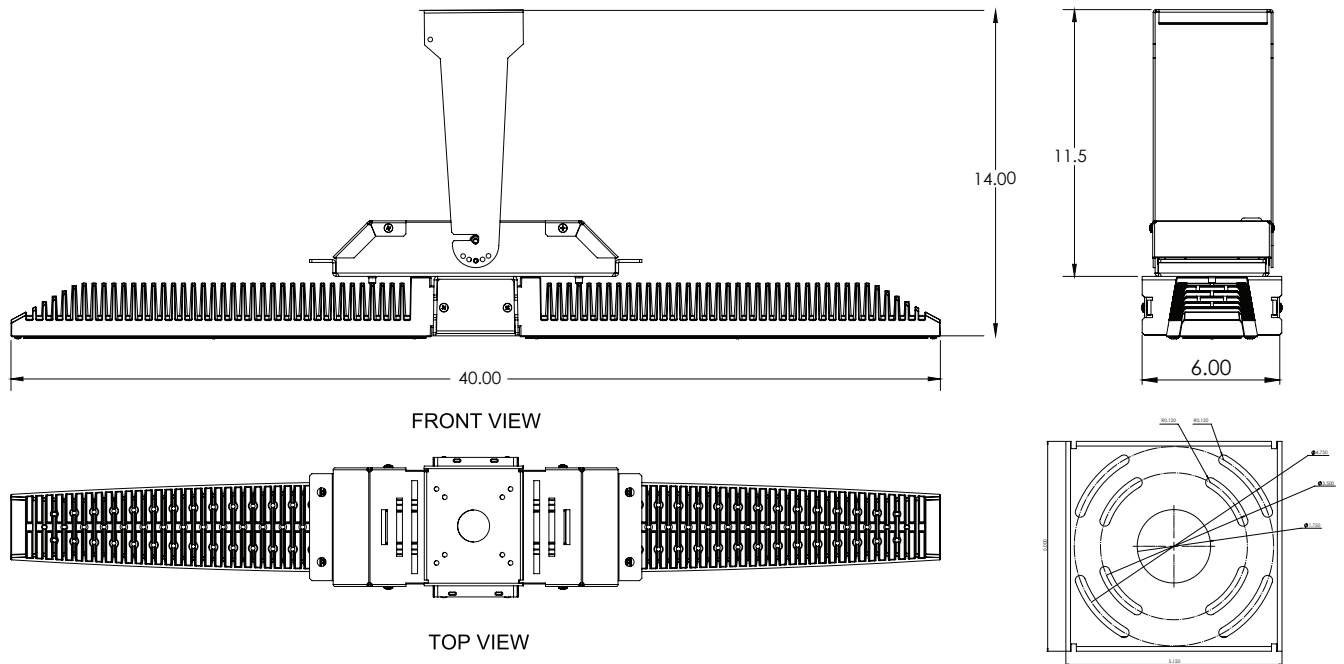
BLB-2 3/4" Conduit Mount
16 LBS



BLB-4 3/4" Conduit Mount
30 LBS



BLB-2 Trunnion Mount
16 LBS



BLB-4 Trunnion Mount
30 LBS

