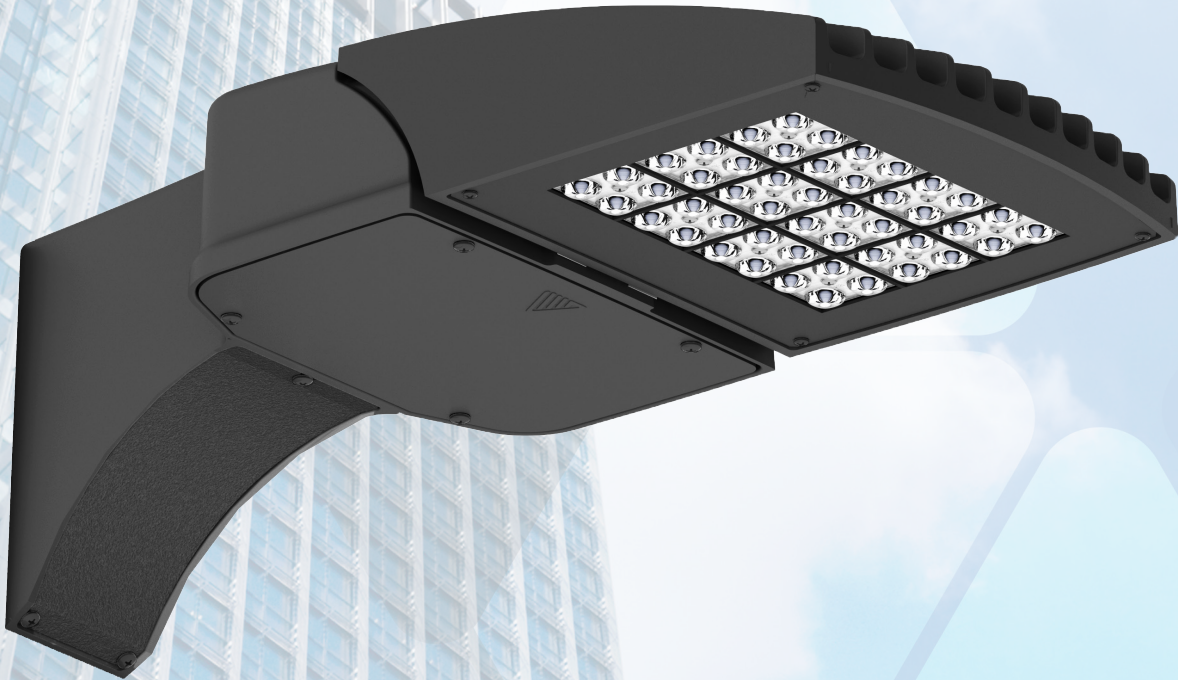


VISIONAIRE

L I G H T I N G

The new **VSX-II LED Series** offers clean, functional styling that is defined by its sleek low profile design and rugged construction. It combines LED performance and advanced LED thermal management technology and provides outdoor lighting that is both energy efficient and aesthetically pleasing.

VSX-II



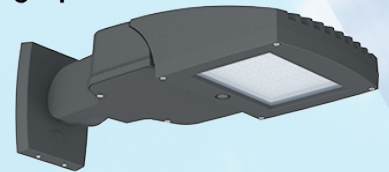
Key Features

- Die Cast aluminum housing
- IP65 Housing and LED optical assembly
- 400 W Replacement
- Six New Versatile Mounts (UAM, SAM, AM, KM, MAF, AWM)
- Seven Comprehensive Shields (CLS, R-CLS, L-CLS, ADJLS, EGLS, HS, BD)
- Two Levels of Visual Comfort (LDL - Low Diffused and HDL - High Diffused)
- 8 Specification Grade low glare optics
- 18 - 160 wattage range
- 120-277 universal Drivers, 347 & 480 voltage drivers
- 10KV Surge Protector
- 90% Power Factor
- 10 Year Electrical Warranty
- PangeaLink compatible
- Quick Mount Cleat
- Mounts to round or square pole
- 3, 5 and 7 Photocell receptacles
- 0-10V Dimming driver
- Title 24 Compliant Motion Sensor

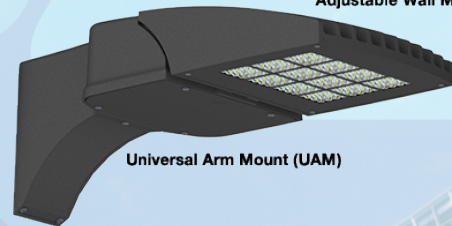
VSX-II Mounting Options



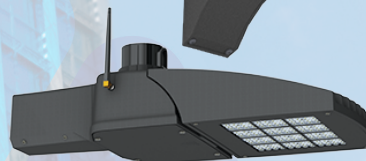
Standard Arm Mount (SAM)



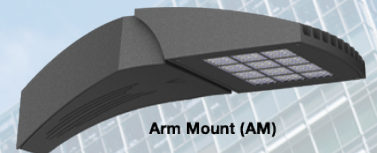
Adjustable Wall Mount (AWM)



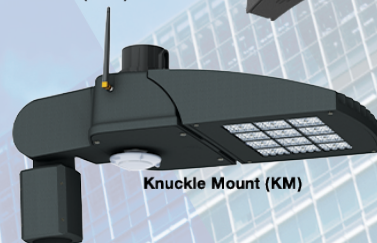
Universal Arm Mount (UAM)



Mast Arm Fitter (MAF)



Arm Mount (AM)



Knuckle Mount (KM)

VSX-II LED Specifications



*Universal Arm Mount (UAM) Version Shown.

Project Name:

Catalog Number:

Type:

The **VSX-II LED** Series offers clean, functional styling that is defined by its sleek low profile design and rugged construction. It combines LED performance and advanced LED thermal management technology and provides outdoor lighting that is both energy efficient and aesthetically pleasing.

The LED's performance and the driver's life are maximized by enclosing them in two separate cast aluminum housings. Easy captive screw access for mounting and maintenance.

The LED light assemblies come with 16 to 48 LEDs. Eight optical distribution patterns are available. Choose between 3000, 4000 or 5000 Kelvin temperature of the LEDs.

A durable polyester powder coat finish is guaranteed for five years; and is available in standard or custom colors.

The **VSX-II LED** series is an exceptional choice for commercial parking lots, office complexes, architectural projects, and other general lighting projects.

Ordering Information

MODEL	OPTICS	LEDs	CURRENT	KELVIN	VOLTAGE	MOUNTING	FINISH	OPTIONS	OPTIONS	OPTIONS
VSX-II	T1 Type 1	16LC	3 350mA	3K 3000K	UNV 120-277V	AM Arm Mount	BZ Bronze	PCR-120 PCR-208 PCR-240 PCR-277 PCR-347 PCR-480 Photocell & Receptacle	WSC-8 Motion Sensor 8' Mounting Height	UPMA-S Universal Square Pole Mount Adaptor
	T2 Type 2	32LC	5 530mA	4K 4000K						
	T3 Type 3	48LC	7 700mA	5K 5000K	5 480V	UAM Universal Arm W/ Terminal Block Mount (Retrofit)	SBK Smooth Black	PER 5PINPER 7PINPER 3, 5, or 7 Pin Photo Receptacle w/shorting cap Requires Dimming Driver	WSC-40 Motion Sensor 21-40' Mounting Height	BAWP Cast Wall Plate
	T4 Type 4		10 1050mA							
	T4A Type 4 Automotive					KM Knuckle Mount	GP Graphite	DIM 0-10v Dimming Driver	UMAP Universal Mast arm fitter	ROT-L Rotated Optics Left Side
	T5 Type 5					WM Wall Mount *Requires BAWP	GY Grey	RPP Round Pole Plate Adaptor	ECLS Egg Crate Louver Shield	CLS Backside cutoff shield
	T5W Type 5 Wide					AWM Adjustable Wall Mount	SL Silver Metallic	VWC Visionaire Wireless Controls *Consult Factory	ADJLS Adjustable Louver Light Shield	RCLS Rightside cutoff shield
	T5WR Type 5 Wide Round					*Round Pole Plate Adaptors (RPP) are to be ordered separately.	CC Custom Color		BD Barn Door Shield	LCLS Leftside cutoff shield
						*BAWP to be ordered separately			HS House shield	