

Mounting Arms

SMAF

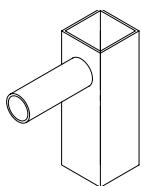
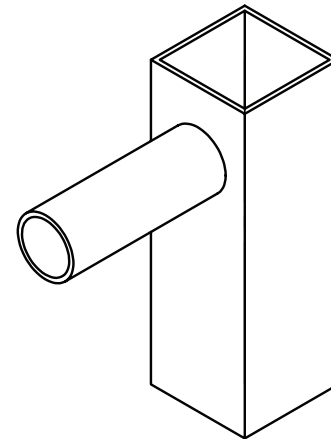
Project Name:

Catalog Number:

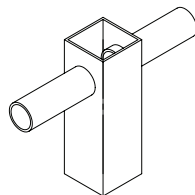
Type:

SMAF adaptors are constructed of 11-gauge square steel tubing with horizontal 2 3/8" diameter, 6" long tenons. Designed to slip-fit over 4" square, 4.5" or 5" square poles or tenons and attach with " stainless steel Allen head set screws. Available in Single, Double 180°, Double 90°, Triple 90° and Quad configurations. Please consult factory for custom configuration or mounting options.

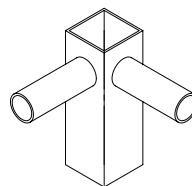
MODEL	MOUNTING	FINISH
SMAF-S1	4 4" x 4"	GY Grey
SMAF-D2	4.5 4.5" x 4.5"	SL Silver Metallic
SMAF-D9	5 5" x 5"	BK Black
SMAF-T9		SBK Smooth Black
SMAF-QD		WH White
		SWH Smooth White
		BZ Bronze
		GP Graphite
		CC Custom Color



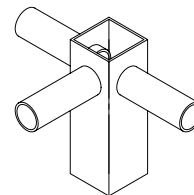
SMAF-S1



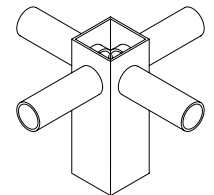
SMAF-D2



SMAF-D9



SMAF-T9



SMAF-QD



EPA WEIGHT
SMAF-S1
 1.41
 15

SMAF-D2
 .7
 17

SMAF-D9
 1.41
 17

SMAF-T9
 .7
 19

SMAF-QD
 1.8
 21